



## Parts List for Ecoer TDi Pro 2 Series Heat Pump Units

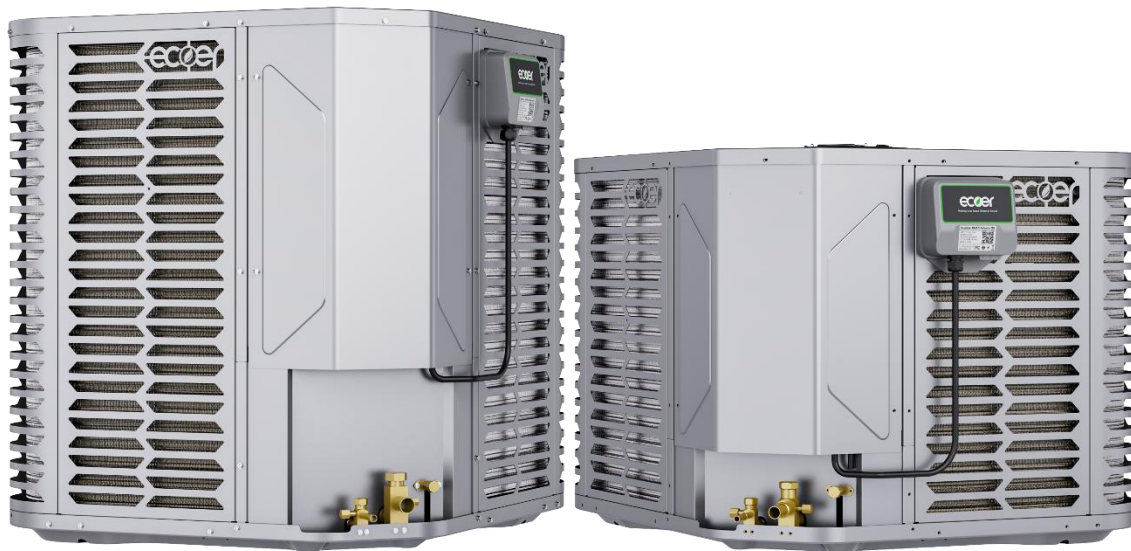
---

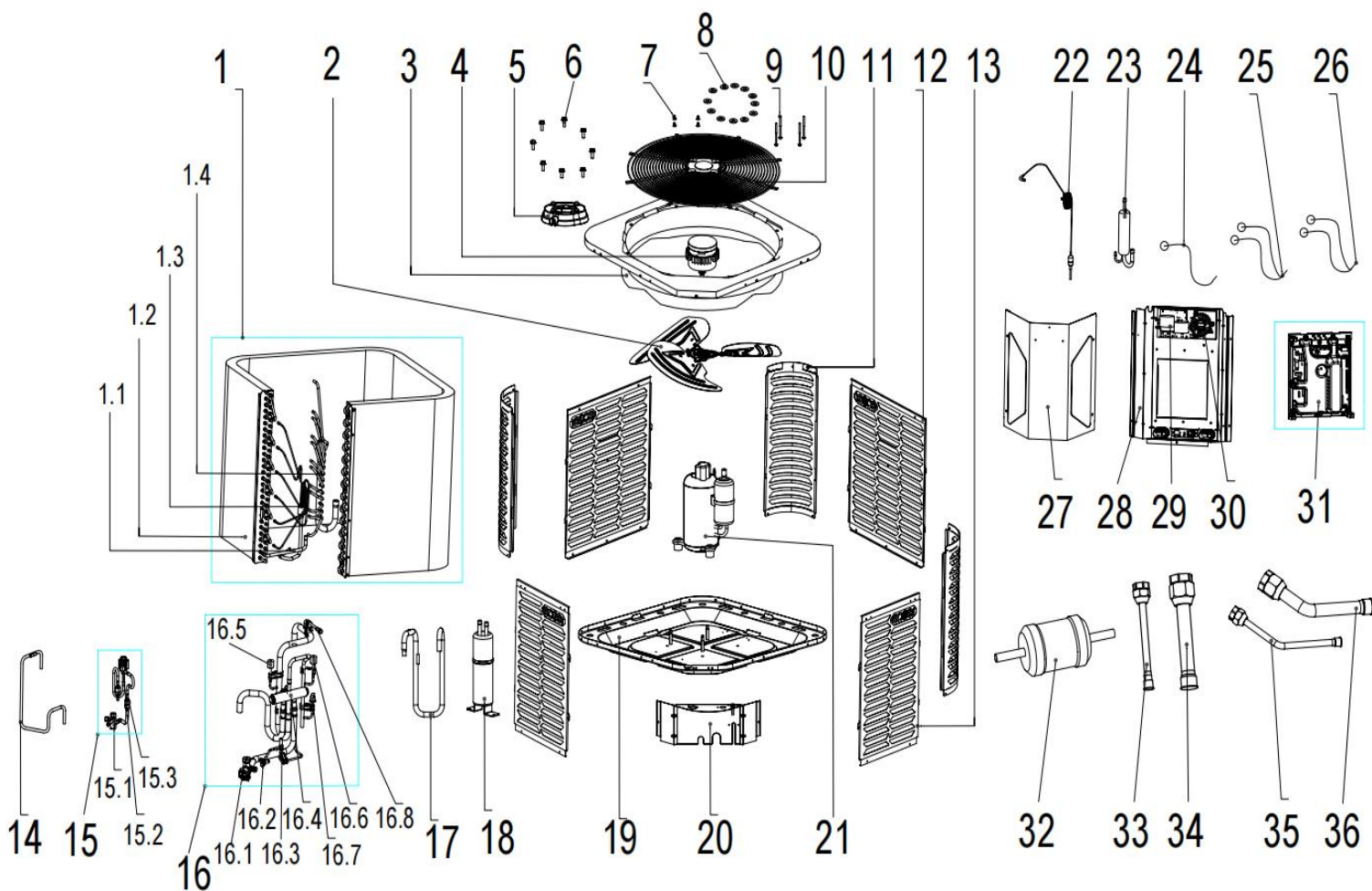
EODA19H-2436ABA

2/3Ton Heat Pump

EODA19H-4860ABA

4/5Ton Heat Pump





| #   | Part Name                       | Quantity | Parts number  |               |
|-----|---------------------------------|----------|---------------|---------------|
|     |                                 |          | 2436A         | 4860A         |
| 1   | Condenser ass'y                 | 1        | EAC2312100038 | EAC2312100045 |
| 1.1 | Condenser connection pipe ass'y | 1        | EAC2400000143 | EAC2400000145 |
| 1.2 | Condenser                       | 1        | EAC2400000144 | EAC2400000146 |
| 1.3 | Condenser outlet pipe ass'y     | 1        | EAC2400000091 | EAC2400000056 |
| 1.4 | Condenser inlet pipe ass'y      | 1        | EAC2400000115 | EAC2400000043 |
| 2   | Fan blade                       | 1        | EAC2308100008 |               |
| 3   | Top cover ass'y                 | 1        | EAC2308100029 |               |
| 4   | Brushless DC Motor              | 1        | EAC2323100001 |               |
| 5   | Motor installation board ass'y  | 1        | EAC2307000030 |               |
| 6   | Screw bolt                      | 8        | EAC2319100041 |               |
| 7   | Cap nut                         | 4        | EAC2319100015 |               |
| 8   | Flat washer                     | 12       | EAC2319100003 |               |

| #      | Part Name                    | Quantity | Parts number  |               |
|--------|------------------------------|----------|---------------|---------------|
|        |                              |          | 2436A         | 4860A         |
| 9      | Electrical installation bolt | 4        | EAC2319100013 |               |
| 10     | Fan grille                   | 1        | EAC2308100037 |               |
| 11     | Supporting board             | 3        | EAC2308100032 | EAC2308100039 |
| 12     | Side board ass'y I           | 2        | EAC2308100033 | EAC2308100040 |
| 13     | Side board ass'y II          | 2        | EAC2308100034 | EAC2308100041 |
| 14     | Discharge pipe ass'y         | 1        | EAC2312100040 | EAC2312100047 |
| 15     | High-pressure valve ass'y    | 1        | EAC2312100062 | EAC2312100066 |
| 15.1   | Liquid block valve           | 1        | EAC2312100063 |               |
| 15.2   | EEV                          | 1        | EAC2312100013 | EAC2312100007 |
| 15.3   | EEV solenoid coil            | 1        | EAC2309100009 |               |
| 16     | Reversing valve ass'y        | 1        | EAC2312100059 | EAC2312100064 |
| 16.1   | Gas block valve              | 1        | EAC2312100060 | EAC2312100065 |
| 16.2   | Pipe joint ass'y             | 1        | EAC2312100088 |               |
| 16.3   | Solenoid valve               | 1        | EAC2312100005 |               |
| 16.4.1 | Reversing valve body         | 1        | EAC2312100003 |               |
| 16.4.2 | Reversing valve coil         | 1        | EAC2309100008 |               |
| 16.5   | Low pressure sensor          | 1        | EAC2309100004 |               |
| 16.6   | High pressure sensor         | 1        | EAC2309100002 |               |
| 16.7   | High pressure switch         | 1        | EAC2309100003 |               |
| 17     | Suction pipe ass'y           | 1        | EAC2312100061 | EAC2312100048 |
| 18     | Gas-liquid separator         | 1        | EAC2312100010 | EAC2312100029 |
| 19     | Chassis Parts                | 1        | EAC2308100026 |               |
| 20     | Lower side plate             | 1        | EAC2308100035 | EAC2308100043 |
| 21     | Compressor                   | 1        | EAC2315100003 | EAC2315100004 |
| 22     | Capillary ass'y              | 1        | EAC2312100015 | EAC2312100050 |
| 23     | Oil separator                | 1        | EAC2312100011 | EAC2312100002 |
| 24     | Discharge Temp. sensor       | 1        | EAC2309100007 |               |
| 25     | Pipe Temp. sensor ass'y      | 1        | EAC2309100006 |               |
| 26     | Temp. sensor ass'y           | 1        | EAC2309100005 |               |

| #  | Part Name                     | Quantity | Parts number   |                |
|----|-------------------------------|----------|----------------|----------------|
|    |                               |          | 2436A          | 4860A          |
| 27 | Upper cover ass'y             | 1        | EAC2308100038  | EAC2308100044  |
| 28 | Electronic control components | 1        | EAC2400000124  | EAC2308100042  |
| 29 | Noise filter                  | 1        | EAC230904101   | EAC230904102   |
| 30 | PFC inductor                  | 1        | EAC2400000091  | EAC2400000056  |
| 31 | Motherboard component         | 1        | EAC230904170   | EAC230904171   |
| 32 | Filter drier                  | 1        | EAC2312100097  |                |
| 33 | Liquid adapter tube           | 1        | EAC2312100073  |                |
| 34 | Gas adapter tube              | 1        | EAC2312100074  | EAC2312100075  |
| 35 | 135° Liquid adapter tube      | 1        | EAC2312100098  |                |
| 36 | 135° Liquid adapter tube      | 8        | EAC.2312100099 | E.AC2312100100 |

©2025 ECOER INC.

4040 McDermott Road, Suite 200 Plano, Texas 75024

Tel: 703-348-2538

[www.ecoer.com](http://www.ecoer.com)