

Braeburn®

SALUS® | BlueLink®



Thermostats

Builder Series

500 / 505 megaswitch ® Mechanical.....	3
1020NC / 1025NC / 1220NC Non-Programmable.....	3
2020NC / 2220NC Programmable	3

Economy Series

1030 / 1230 Non-Programmable.....	4
2030 / 2230 Programmable	4

Premier Series

4020	5
4030 / 4235	5

BlueLink SOLO™ Wi-Fi

ST920WF	6
ST921WF	6

BlueLink Smart Connect® Wi-Fi

NEW! 8205	7
BlueLink Smart Connect® App.....	8

BlueLink® Wireless

NEW! 8500	9
Thermostat Accessories	10
FREE Contractor Branding	11
Thermostat Cross Reference	12

Zone Control Panels

Economy Series

140202 2-Zone Control Panel	13
140303 3-Zone Control Panel	13

Premier Series

140221 2-Zone Control Panel	15
140332 3-Zone Control Panel	15
140404 4-Zone Expandable Control Panel	17
140424 2-Zone Expander Control Panel	17

Zone Control Dampers

Round Zone Dampers.....	19
Rectangular Zone Dampers.....	20
Zoning Systems Accessories	21
Zone Panel Cross Reference	22

Wireless Mesh Networks

Wireless Mesh Networks	23
Gateway	24
Smart Home App	24
Fan Coil Thermostats	25
Wireless Fan Coil Thermostat Kit.....	26
Optima S Thermostats	27
Smart Home and Building Accessories	28
Water Leak Detection	29
Water Leak Protection	30

Hydronics

Wireless Hydronic Systems	31
Gateway	32
Smart Home App	32
Pump Relay Controls	33
Valve Relay Controls	35
Thermal Actuators	36
Wireless Boiler Receiver	36
Wireless Radiator Valve Actuator	37
Wireless Radiant Thermostat	38

Example Applications

Example Smart Home	39
Example Smart Building	41

2
Sq. In.
Display



Non-Programmable Thermostats

- 1020NC** - 1 Heat / 1 Cool
- 1025NC** - Heat Only
- 1220NC** - 2 Heat / 1 Cool

2
Sq. In.
Display



Universal Programmable Thermostats

- 2020NC** - 1 Heat / 1 Cool
- 2220NC** - 2 Heat / 1 Cool

Compatibility

- Single Stage Conventional or Heat Pump Systems
- Multistage Heat Pump Systems (1220NC, 2220NC)
- Multistage Conventional Systems (1220NC, 2220NC)
- 2-Wire Hydronic Zone Systems (1025NC: 2 or 3-Wire)
- Millivolt Systems

Features

- Large Display with Bright Blue Backlight
- Adjustable Temperature Limits for Multi-Family Housing
- Hardwire or Battery Powered
- Permanent Memory Retains Settings
- Low Battery Indicator
- Front Access Reset Button
- Compressor Short Cycle Protection
- Fahrenheit or Celsius Display Mode
- Adjustable Temperature Differential
- ESD Guard™ Electronic Circuitry
- Trilingual Packaging and Instructions

Additional Features (2020NC/2220NC)

- 7 Day, 5-2 Day or Non-Programmable
- Temporary Program Override
- Programmable Extended Hold Mode
- Filter Check Monitor
- Adaptive Recovery Mode (ARM™)



FREE Color Contractor Branding on Quick Reference Instruction Card. See page 11.

Mechanical Thermostats



500
1 Heat / 1 Cool

505
Heat Only



NEW!
Ultra-Slim
Design

4.4
Sq. In.
Display



Non-Programmable Thermostats

- 1030** - 1 Heat / 1 Cool
- 1230** - 2 Heat / 1 Cool

4.4
Sq. In.
Display



Universal Programmable Thermostats

- 2030** - 1 Heat / 1 Cool
- 2230** - 2 Heat / 1 Cool

Compatibility

- Single Stage Conventional or Heat Pump Systems
- Multistage Heat Pump Systems (1230, 2230)
- Multistage Conventional Systems (1230, 2230)
- 2-Wire Hydronic Zone Systems
- Millivolt Systems

Features

- Large Display with Bright Blue Backlight
- SmartLimit® Temperature Limits
- Hardwire or Battery Powered
- Permanent Memory Retains Settings
- Low Battery Indicator
- Adjustable Short Cycle Protection
- Fahrenheit or Celsius Display Mode
- Adjustable Temperature Differential
- ESD Guard™ Electronic Circuitry
- Installer Lock Mode
- Filter Check Monitor
- Trilingual Packaging and Instructions

Additional Features (2030/2230)

- 7 Day, 5-2 Day or Non-Programmable
- Temporary Program Override
- Programmable Extended Hold Mode
- Adaptive Recovery Mode (ARM™)



4.4
Sq. In.
Display



Universal Programmable Thermostats

4030 - 2 Heat / 1 Cool
4235 - 3 Heat / 2 Cool 
with Humidity Control

4.4
Sq. In.
Display



Universal Programmable Thermostat

4020 - Heat Only Hydronic

Additional 4020 Features

- Minimum Boiler on Time
- Freeze Protection
- High/Low Floor Limits
- Remote Slab Sensing

Compatibility

- Single Stage Conventional or Heat Pump Systems¹
- Multistage Heat Pump Systems¹
- Multistage Conventional Systems¹ (4235)
- 2 or 3-Wire Hydronic Zone Systems
- Millivolt Systems

NEW!
Ultra-Slim
Design

Features

- 7 Day, 5-2 Day or Non-Programmable
- Large Display with Adjustable Backlight
- SmartLimit® Temperature Limits
- Auto or Manual Changeover¹
- Residential or Commercial Modes
- Hardwire or Battery Powered
- Permanent Memory Retains Settings
- Circulating Fan Mode¹
- Programmable Extended Hold Mode
- Programmable Fan Mode¹
- Adaptive Recovery Mode (ARM™)
- Installer Lock Mode
- Pre-Occupancy Purge Option¹
- User Selectable Service Monitors¹
- Indoor or Outdoor Remote Sensing¹
- Multi-Level Keypad Lockout
- Heat Pump Balance Points¹
- Auxiliary Heat Fossil Fuel Option¹
- Trilingual Packaging and Instructions
- Multi-Function Dry Contact Input for Occupancy Control, Condensate Monitoring or Door Switch Activation¹
- Dehumidification Control with Overcooling (4235)
- Humidification Control (4235)





6
Sq. In.
Display

ST920WF

3 Heat / 2 Cool Heat Pump
2 Heat / 2 Cool Conventional
with Touch Keys



4.8
Sq. In.
Display

ST921WF

2 Heat / 1 Cool Heat Pump
2 Heat / 1 Cool Conventional
1 Heat / 2 Cool Conventional
with Push Buttons



Smart Wi-Fi Thermostats

Features

- 7 Day, 5-2 Day or Non-Programmable¹
- Auto or Manual Changeover
- Keypad Lockout
- Auxiliary Heat Fossil Fuel Option
- Frost Protection
- Temperature Limits¹
- Temperature Reading Offset



- Compatible with Virtually All Smartphones and Tablets
- Monitor and Control Multiple Thermostats Remotely
- Configure Thermostat from App
- Lock and Unlock Thermostats Remotely



Wire Extender for SOLO Wi-Fi Thermostats

- Allows the use of a common (C) wire connection without running new wires
- Easy wire push button terminals
- 3 ft (1m) cable for connection to control board
- Works with 2-wire installations



SA918

^{*}Not for use with BlueLink Smart Connect[®]



Phone not included.

¹When used with application

Wi-Fi Remote Access from Smartphone, Tablet or PC



Smart Wi-Fi Universal Thermostat
8205
3 Heat / 2 Cool Heat Pump
2 Heat / 2 Cool Conventional

Thermostat Features

- 7 Day, 5-2 Day or Non-Programmable
- Bright Blue Backlight
- Auto or Manual Changeover
- User and Installer Lock Modes
- SmartLimit® Temperature Limits
- Circulating Fan Mode
- Auxiliary Heat Fossil Fuel Option
- ★ Wi-Fi works without common (C) wire on most systems. Requires common (C) wire on all Heat Pump, Heat Only or Cool Only Systems

No Common (C) Wire Required for Wi-Fi on most systems*

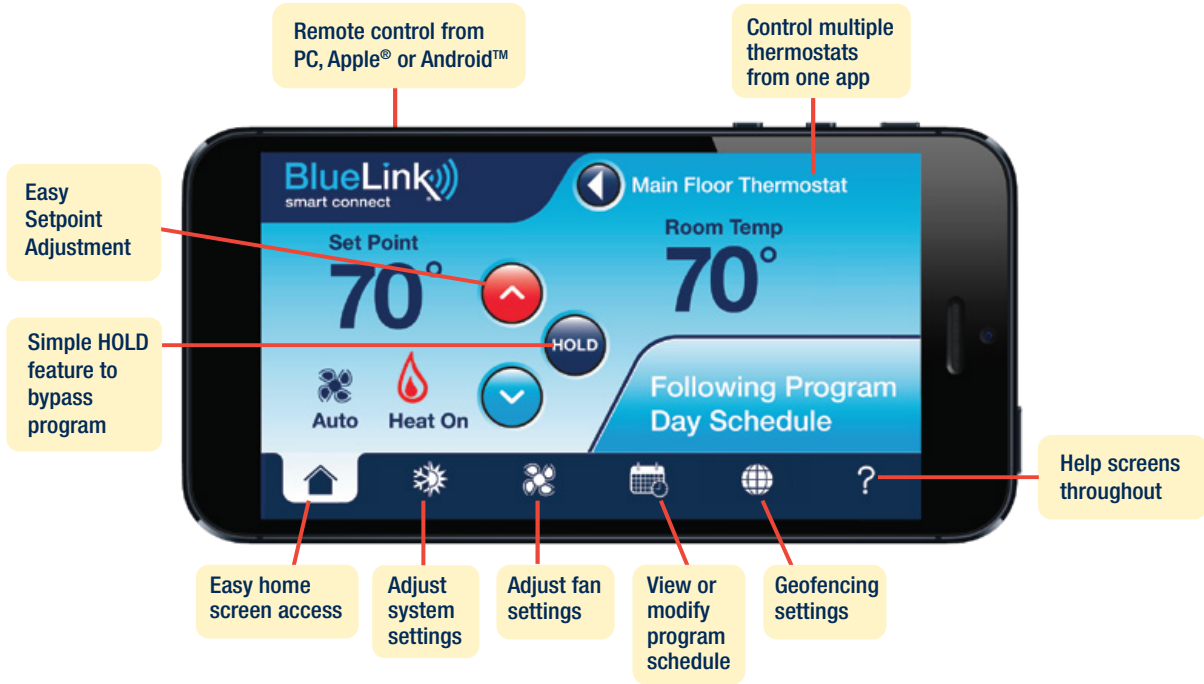
Application Features

- Compatible with Virtually All Smartphones, Tablets or PC's
- Multi-Color Program Groups Simplify Scheduling
- Flexible Vacation and Holiday Scheduling
- Text and E-Mail Service and Temperature Alerts
- BlueLink QuickCopy® Allows User to Duplicate Program and Configuration to Other Thermostats
- QuickEdit® Makes Schedule Changes Easy
- BlueLink SmartData® Energy Report Capability
- Monitor and Control Multiple Thermostats
- Easy Access Dealer Information
- Optional Geofencing for Increased Energy Savings



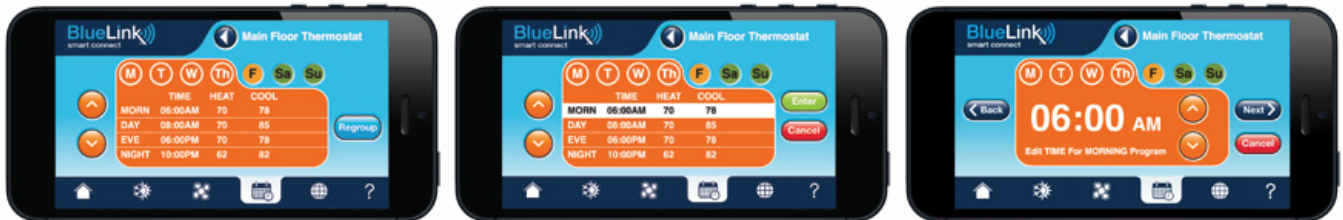
FREE Custom Face Plates! See page 11.

ABC Heating & Cooling
For Service Call 800-255-1234
abc@abc.com



Multi-Color Program Groups with QuickEdit®

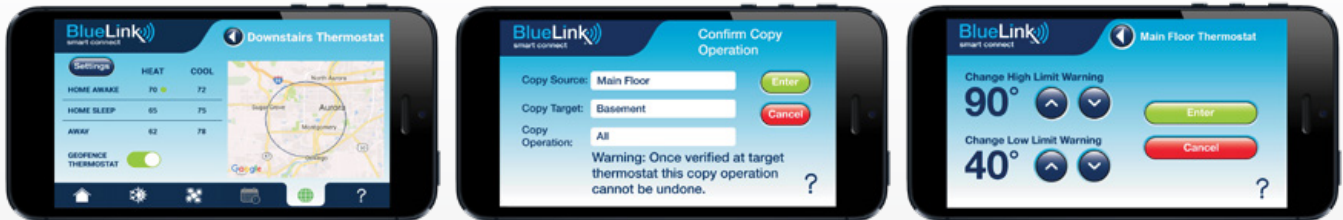
Simplifies program scheduling by allowing the user to group days.



Geofencing

BlueLink QuickCopy® Feature

Service & Temp Alerts



BlueLink SmartData® Reports

Generate usage reports for your thermostat. Compatible with virtually all smartphones, tablets or PC's!



BlueLink Application Help Available:
www.bluelinksmartconnect.com
Requires iOS or Android™ to connect



Compatible with Amazon Alexa
Amazon Alexa is a trademark of Amazon.com, Inc.



Thermostat Features



- 7 Day, 5-2 Day or Non-Programmable
- Large Display with Bright Blue Backlight
- Auto or Manual Changeover
- Residential or Commercial Modes
- Battery Operated for Total Installation Flexibility
- Compatible with 2 or 3-Wire Hydronic Systems
- Heat Pump Balance Points
- Auxiliary Heat Fossil Fuel Option
- Programmable Fan Mode
- R and C Terminals for Optional 24 Volt Operation
- Adjustable Temperature Limits
- Multi-Level Keypad Lockout

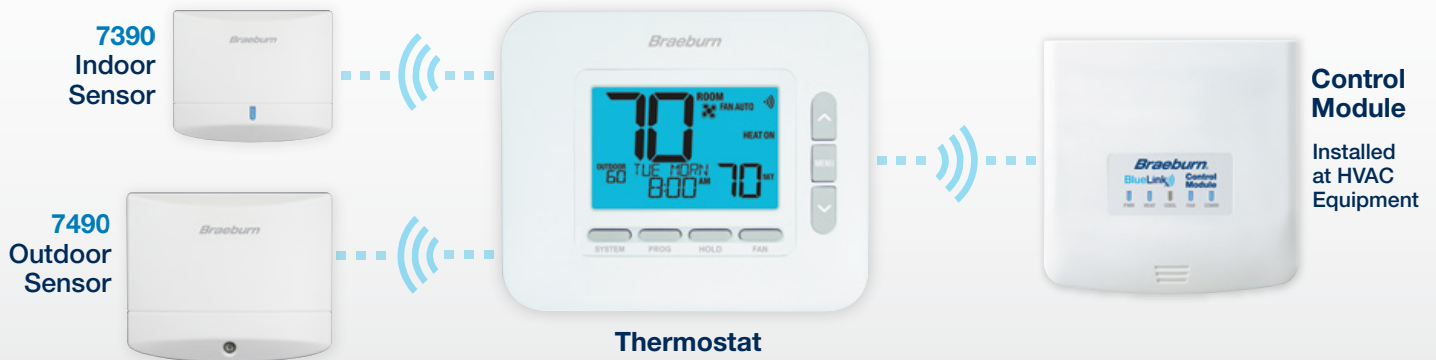
Wireless Features

- Superior Wireless Range
- Battery Life Exceeds Virtually All Competitive Models
- Includes Return Air Sensor for Default Temperature Control Even if Batteries are Drained
- Connect up to 4 Optional Wireless Indoor Sensors for Remote Temperature Sensing
- Optional Wireless Outdoor Sensing for Outdoor Temperature Display or Balance Point Control
- Affordable Solution for Most Thermostat Applications

Universal Wireless Thermostat Kit

8500 - 3 Heat / 2 Cool

Total Installation Flexibility





5390 Wired Remote Indoor Sensor

- Contemporary style for any decor
- For use with compatible Braeburn thermostats
- Sense range of 40° to 99°F

5490 Wired Remote Outdoor Sensor

- Mounts outdoors up to 200 feet away
- Enables outdoor control functions on compatible Braeburn thermostats
- Sense range of -40° to 120°F

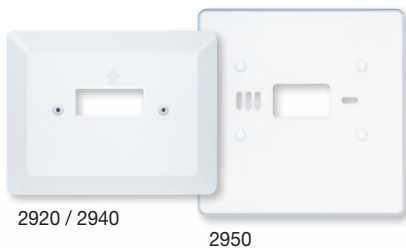


5970 Thermostat Guard

- Universal—fits virtually all thermostats
- Replaces over 100 competitive models
- Tamper resistant design
- Two keys Included
- Fits thermostats up to 7.3"W x 5.25"H x 1.8"D

165 Construction Thermostat

- Install in place of standard 24 Volt AC thermostat during construction
- Maintains fixed temperature set point of 65° heat
- Sturdy enclosure protects switch from drywall dust, paint and mudding



2920/2940* Vertical Wall Plate

- Adapts vertical J box to horizontal mount
- Sturdy two piece construction
- 6.5"W x 5.13"H (2920)
- 6.5"W x 5.5"H (2940)

2950 Universal Wall Plate

- Covers mounting marks from old thermostats
- Use with all Braeburn digital thermostats
- 6.5"W x 6.5"H



AFTS40M Wired Floor/Slab Sensor

- For use with hydronic thermostats
- Enables floor temperature limits and floor temperature control
- 4m wire length

*2940 fits all new Economy, Premier, and BlueLink® thermostats (except BlueLink SOLO™).

BlueLink® Wireless Accessories



7390 Wireless Remote Indoor Sensor

- Sense temperature at remote location or average with thermostat
- Up to 4 wireless remote indoor sensors can be connected
- Front LED light shows sensor status
- Requires 2 "AA" Alkaline batteries (included)

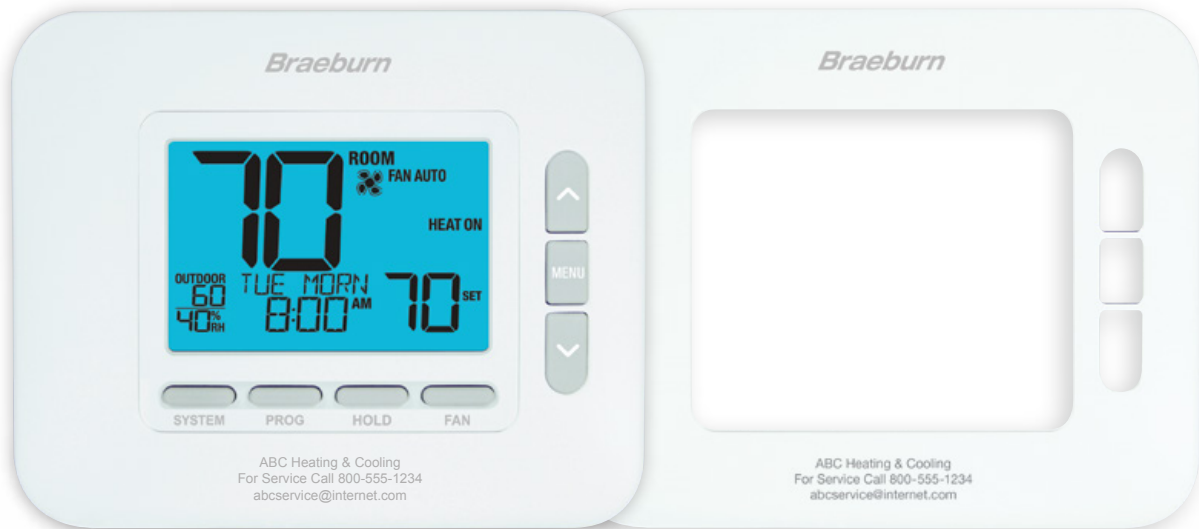


7490 Wireless Remote Outdoor Sensor

- Display outdoor temperature
- Use for heat pump balance point control
- 1 wireless remote outdoor sensor can be connected
- Requires 2 "AA" Lithium batteries (included)

FREE Custom Face Plates

Fits all Braeburn Economy, Premier and BlueLink thermostats!*



- Visit www.braeburnonline.com/contractor-branding
- Provide 3 lines of text (no logos) - 30 characters per line
- Contractors will receive 48 custom branded thermostat face plates for FREE, with no set-up fees or branding charges.
- Please allow 2-3 weeks for delivery

With Braeburn, there are no minimum purchase requirements for the contractor to advertise 24 hours a day in customers' homes. Your contact information will be readily available when it is time for maintenance or equipment repair.

FREE Quick Reference Cards with Color Logo

Available for Builder Series thermostats.

- Visit www.braeburnonline.com/contractor-branding
- Upload your high resolution logo in TIF, JPG or EPS format
- Contractors will receive 50 full color Contractor Branded Quick Reference Cards for FREE, with no set-up fees or branding charges.
- Please allow 2-3 weeks for delivery



Braeburn Thermostat Feature Comparison

Cross Reference

	Braeburn Model	Staging	Systems	Battery/ Hardwire	Display Size (Sq. In.)	Commercial Features	Remote Sensing	FREE Branding	Warranty	Honeywell®	Emerson®	Pro1®
MECHANICAL	500	1H/1C	Conventional, Heat Pump	Hardwire	-	-	-	-	1 Year	T834N T87N	1E56N	T501M
	505	Heat Only	Conventional	Hardwire	-	-	-	-	1 Year	T822K T827K	1E30 1E50	-
NON-PROGRAMMABLE	1020NC	1H/1C	Conventional, Heat Pump	Yes	2	-	-	Yes	5 Year	TH1110 TH3110	1F75C-11NP 1F78-144 1E78-144	T601-2 T701
	1025NC	Heat Only	Conventional, Hydronic	Yes	2	-	-	Yes	5 Year	TH1100	1E78-140	T771
	1030	1H/1C	Conventional, Heat Pump	Yes	4.4	-	-	Yes	5 Year	TH3110 TH5110	1F83C-11NP 1F86-0244	T701
	1220NC	2H/1C	Conventional, Heat Pump	Yes	2	-	-	Yes	5 Year	TH1210 TH3210	1F72-151 1F79-111 1F75H-21NP	T621-2 T721
	1230	2H/1C	Conventional, Heat Pump	Yes	4.4	-	-	Yes	5 Year	TH3210 TH5220	1F83H-21NP 1F89-0211	T721
UNIVERSAL PROGRAMMABLE	2020NC	1H/1C	Conventional, Heat Pump	Yes	2	-	-	Yes	5 Year	TH2110 TH4110	1F75C-11PR 1F78-151 1E78-151	T605-2 T705
	2030	1H/1C	Conventional, Heat Pump	Yes	4.4	-	-	Yes	5 Year	TH4110	1F83C-11PR 1F80-0261 1F80-0224	T705
	2220NC	2H/1C	Conventional, Heat Pump	Yes	2	-	-	Yes	5 Year	TH2210 TH4210	1F82-261 1F72-151 1F75H-21PR	T625-2
	2230	2H/1C	Conventional, Heat Pump	Yes	4.4	-	-	Yes	5 Year	TH4210	1F83H-21PR 1F82-0261	T715 T725
	4020	Heat Only	Hydronic	Yes	4.4	-	Indoor/ Outdoor/ Slab	Yes	5 Year	H6100AF	-	-
	4030	2H/1C	Conventional, Heat Pump, Hydronic	Yes	4.4	Yes	Indoor/ Outdoor	Yes	5 Year	TH6110 TH6210	1F85U-22PR	T805
	4235	3H/2C ¹	Conventional, Heat Pump, Hydronic	Yes	4.4	Yes	Indoor/ Outdoor	Yes	5 Year	TH6220 TH6320	1F85U-42PR 1F95-0671 1F95-0680	T751 T755 T755S T855 T855SH
BLUELINK®	8205	3H/2C ¹	Conventional, Heat Pump	Yes ³	4.4	-	-	Yes	5 Year	TH6320WF TH6220WF	1F86U-42WF	T701i T721i T751i
	8500	3H/2C ¹	Conventional, Heat Pump	Yes ²	4.4	Yes	Indoor/ Outdoor/ Wireless	Yes	5 Year	YTH5320R YTH6320R	-	TH755W
	ST920WF	3H/2C ¹	Conventional, Heat Pump	Hardwire	6	-	-	-	5 Year	TH6320WF TH6220WF	1F86U-42WF	T751i
	ST921WF	2H/1C ⁴	Conventional, Heat Pump	Hardwire	4.8	-	-	-	5 Year	TH6220WF	-	T701i T721i

¹2H/2C Conventional ²Control module hardwired to equipment ³Common (C) wire not required on most 4-wire systems ⁴1H/1C configuration available

Verify specific application requirements. All trademarks are the property of their respective owners. Product specifications may change without notice.



2-Zone Control Panel
140202
2 Heat / 1 Cool



3-Zone Control Panel
140303
3 Heat / 2 Cool

Compatibility

- Single Stage Conventional or Heat Pump Systems
- Multistage Conventional or Heat Pump Systems
- Single Stage Conventional Thermostats - For Lower Cost
- Power Open, Power Close or Spring Return Dampers

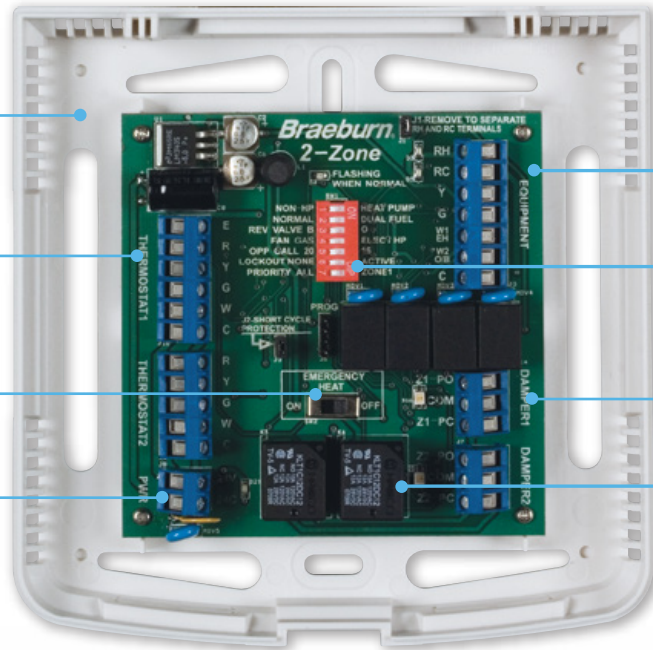
Features

- Sleek, Low Profile Design
- Quick Connect Terminals Speed Installation
- On-Board Emergency Heat Switch
- Ability to Connect External Emergency Heat Switch
- Selectable Zone Priority
- Fan Purge Into Last Calling Zone
- Easy-Set Dip Switches
- Heavy Duty 10-Amp Relays
- Short Cycle Protection Jumper
- Zone Calling Status LED's

Additional Features (140303)

- On-Board LED Display
- Supply Air Sensor Included
- Adjustable Purge Control
- Thermostat Status LED's
- Equipment Status LED's
- 2-Stage Fan Control
- Advanced Staging

140202



Flexible System Options

Controls conventional, heat pump, electric, and dual fuel systems

Thermostat Terminals

Use with conventional 4 or 5 wire thermostats

Emergency Heat Switch

With remote terminals

Power Terminals

Accepts standard 24 VAC power from transformer. Built in self-resetting fuse helps protect panel

Equipment Terminals

Simple equipment connections

Easy-Set Dip Switches

Select system preferences

Damper Terminals

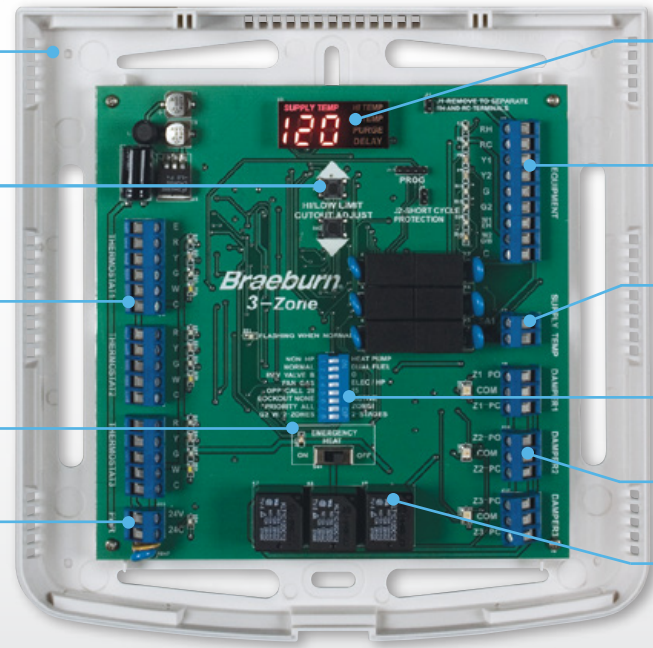
With LED indicators

Heavy Duty Relays

10-Amp capacity for extra durability

Compact 6" x 6" Housing

140303



Flexible System Options

Controls conventional, heat pump, electric, and dual fuel systems

Adjustable Purge Control

Maximizes economy and occupant comfort

Thermostat Terminals

Use with conventional 4 or 5 wire thermostats

Emergency Heat Switch

With remote terminals

Power Terminals

Accepts standard 24 VAC power from transformer. Built in self-resetting fuse helps protect panel

LED Display

Easy to read LED display shows system temperature and purge status

Equipment Terminals

Simple equipment connections with LED status indicators

Supply Air Sensor

Monitors plenum temperature and provides adaptive staging

Easy-Set Dip Switches

Select system preferences

Damper Terminals

With LED indicators

Heavy Duty Relays

10-Amp capacity for extra durability

Compact 8" x 8" Housing



2-Zone Control Panel
140221 - 2 Heat / 1 Cool



3-Zone Control Panel
140332 - 3 Heat / 2 Cool

Compatibility

- Single Stage Conventional or Heat Pump Systems
- Multistage Conventional or Heat Pump Systems
- Single Stage or Multistage Thermostats
- Power Open, Power Close or Spring Return Dampers

Features

- Large Display with Bright Blue Backlight
- Push-In Terminals For Easy Wiring
- On-Board Emergency Heat Switch
- Ability to Select Emergency Heat From Thermostat
- Selectable Zone Priority
- Adjustable Purge Control
- Built-In Test Mode
- Easy Setup and Configuration
- Heavy Duty 10-Amp Relays
- Flexible Staging Controlled by Panel or Thermostats
- Balance Point Control with Optional Outdoor Sensor
- Auxiliary Heat Fossil Fuel Option
- System Reset Button
- Thermostat Status LED's
- Equipment Status LED's
- Zone Calling Status LED's

Additional Features (140332)

- Includes Optional Supply Air Sensor For Limit Protection
- 2-Stage Fan Control

140221

Flexible System Options

Controls conventional, heat pump, electric, and dual fuel systems

Flexible Thermostat Options

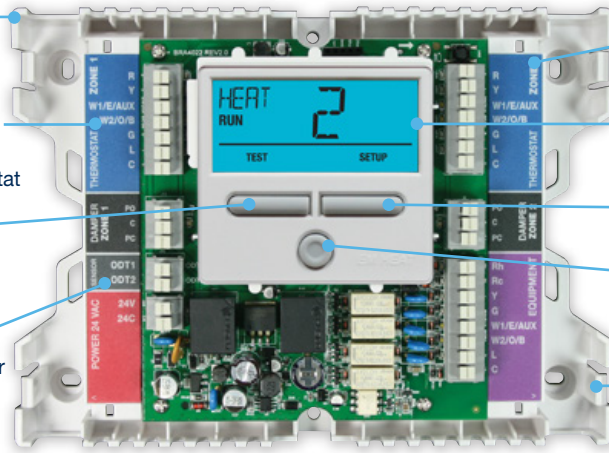
Works with virtually any low voltage heat pump or conventional thermostat

Built In Test Mode

Test all dampers and equipment from panel

Outdoor Sensor Terminals

Connect to Braeburn outdoor sensor for heat pump balance point control



Thermostat Terminals

Push-in wiring terminals with LED status indicators

Large Display

3 sq. in. backlit display

Easy 2 Button Setup

Set up and test from main display

Emergency Heat Button

Panel mounted button and selectable thermostat emergency heat control

Professional Appearance

Wire along side and underneath with multiple wire tie points

Compact 8" x 6" Housing

140332

Flexible System Options

Controls conventional, heat pump, electric, and dual fuel systems

Built In Test Mode

Test all dampers and equipment from panel

Damper Terminals

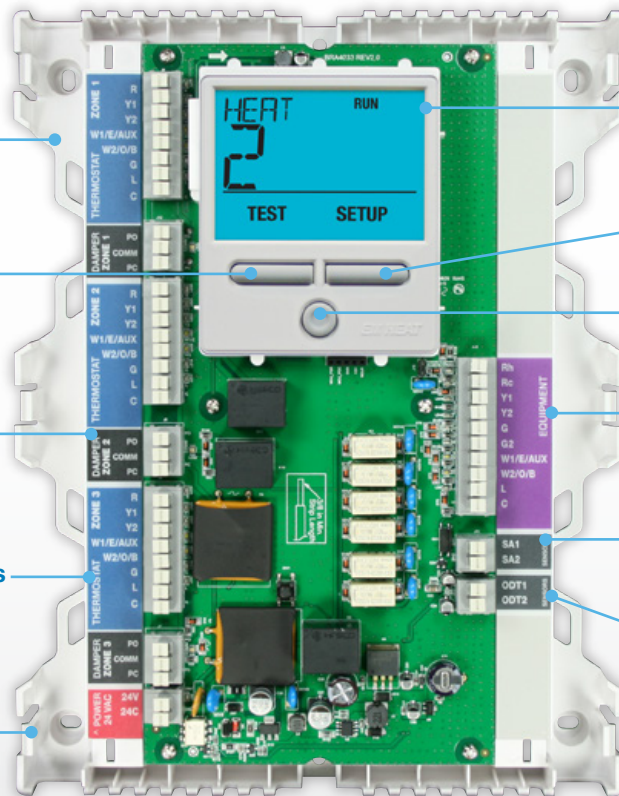
Push-in wiring terminals with LED status indicators

Flexible Thermostat Options

Works with virtually any low voltage heat pump or conventional thermostat

Professional Appearance

Wire along side and underneath with multiple wire tie points



Large Display

5.5 sq. in. backlit display

Easy 2 Button Setup

Set up and test from main display

Emergency Heat Button

Panel mounted button and selectable thermostat emergency heat control

Equipment Terminals

Simple push-in wiring terminals with LED status indicators

Supply Air Sensor (optional)

Stainless steel sensor controls high and low temperature cutout

Outdoor Sensor Terminals

Connect to Braeburn outdoor sensor for heat pump balance point control

Compact 8" x 10" Housing



4-Zone Expandable Control Panel

140404 - 4 Heat / 2 Cool

Use with 140404 Zone Panel



2-Zone Expander Panel

140424 - 4 Heat / 2 Cool

Compatibility

- Single Stage Conventional or Heat Pump Systems
- Multistage Conventional or Heat Pump Systems
- Single Stage or Multistage Thermostats
- Power Open, Power Close or Spring Return Dampers

Features

- Expandable up to 32 Zones
- Large Display with Bright Blue Backlight
- Includes Supply Air Sensor for Staging and Limit Protection
- Push-In Terminals For Easy Wiring
- On-Board Emergency Heat Switch
- Ability to Select Emergency Heat From Thermostat
- Selectable Zone Priority
- Adjustable Purge Control
- Built-In Test Mode
- Easy Setup and Configuration
- Heavy Duty 10-Amp Relays
- Flexible Staging Controlled by Panel or Thermostats
- Balance Point Control with Optional Outdoor Sensor
- Auxiliary Heat Fossil Fuel Option
- System Reset Button
- Fire Alarm Terminals
- 2-Stage Fan Control
- Thermostat Status LED's
- Equipment Status LED's
- Zone Calling Status LED's

Additional Features (140424)

- Add Zones in Affordable 2-Zone Increments
- Installs Up to 500 Ft. from Main Panel
- Stacks Neatly with Main Panel

140404

Flexible System Options

Controls conventional, heat pump, electric, and dual fuel systems

Built In Test Mode

Test all dampers and equipment from main panel

Flexible Thermostat Options

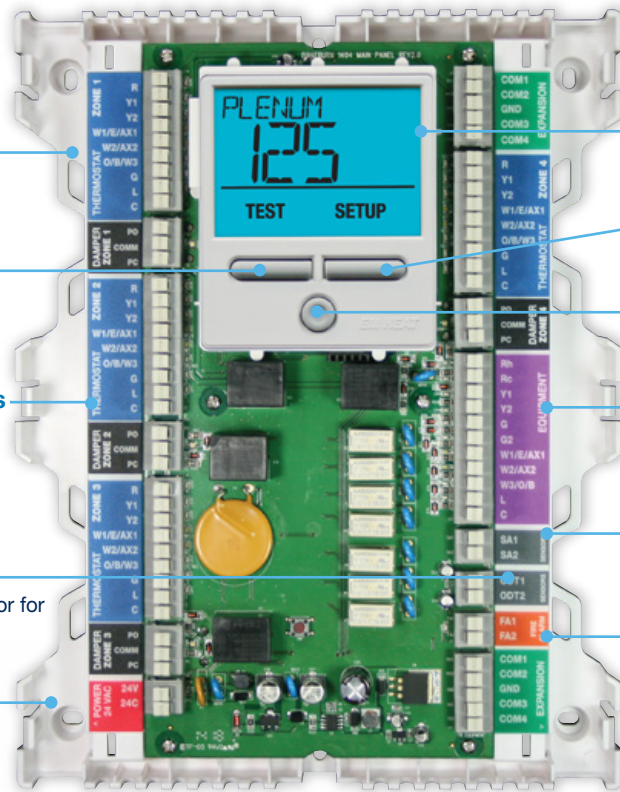
Works with virtually any low voltage heat pump or conventional thermostat

Outdoor Sensor Terminals

Connect to Braeburn outdoor sensor for heat pump balance point control

Professional Appearance

Wire along side and underneath with multiple wire tie points



Large Display

5.5 sq. in. backlit display

Easy 2 Button Setup

Set up and test from main display

Emergency Heat Button

Panel mounted button and selectable thermostat emergency heat control

Equipment Terminals

Simple push-in wiring terminals with LED status indicators

Supply Air Sensor Included

Stainless steel sensor helps control staging and high / low temperature cutout

Fire Alarm Terminals

Selectable for normally open or closed

Compact 8" x 10" Housing

140424

Flexible System Options

Install up to 500 feet from main panel

Flexible Thermostat Options

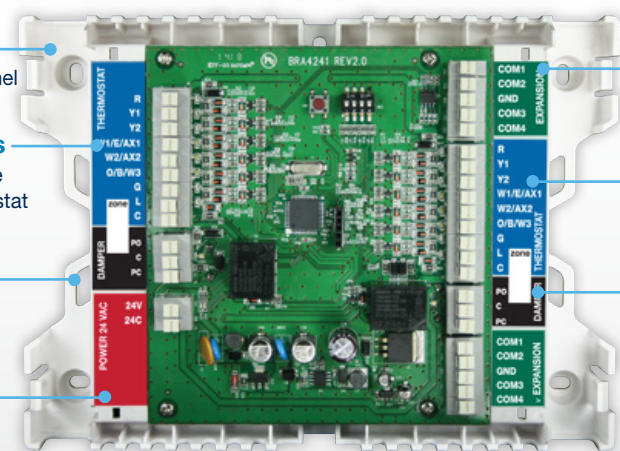
Works with virtually any low voltage heat pump or conventional thermostat

Professional Appearance

Wire along side and underneath with multiple wire tie points

Power Terminals

Accepts standard 24 VAC power from transformer. Built in self-resetting fuse helps protect panel



Easy to Wire

Use standard 5-wire thermostat wire from panel to panel

Thermostat Terminals

Push-in wiring terminals with LED status indicators

Damper Terminals

Push-in wiring terminals with LED status indicators

Easy Setup

Set zone number on main panel

Compact 8" x 6" Housing



Power Open / Power Close

Power Open / Power Close

- For use as zone or bypass damper • 24 VAC 4 VA 3-wire universal operation

Power Open Power Close	Diameter (Inches)	Length (Inches)	Power Open Power Close	Diameter (Inches)	Length (Inches)
109005	5	11.25	109012	12	11.75
109006	6	11.25	109014	14	13.75
109007	7	11.25	109016	16	15.75
109008	8	11.25	109018	18	17.75
109009	9	11.25	109020	20	19.75
109010	10	11.25	—	—	—



Spring Return

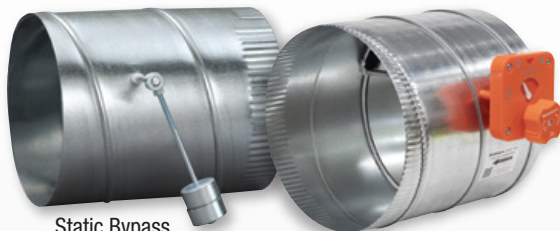
Spring Return

- 24 VAC 8 VA 2-wire universal operation
- Available in Power Close / Spring Return and Power Open / Spring Return

Bypass

- Vertical or horizontal mounting
- Static (weighted arm) or Adjustable Models

Power Close Spring Return	Power Open Spring Return	Static Bypass	Adjustable Bypass	Diameter (Inches)	Length (Inches)
119004	129004	-	-	4	9.75
119005	129005	-	-	5	9.75
119006	129006	119106	-	6	9.75
119007	129007	119107	-	7	9.75
119008	129008	119108	119208	8	9.75
119009	129009	119109	-	9	9.75
119010	129010	119110	119210	10	9.75
119012	129012	119112	119212	12	11.75
119014	129014	119114	119214	14	13.75
119016	129016	119116	119216	16	15.75
119018	129018	119118	-	18	17.75
119020	129020	119120	-	20	19.75



Static Bypass

Adjustable Bypass

Retrofit (PO/PC)

- 24 VAC 4 VA 3-wire universal operation

Round Retrofit (PO / PC)	Diameter (Inches)	Round Retrofit (PO / PC)	Diameter (Inches)
128004	4	128007	7
128005	5	128008	8
128006	6	128010	10



Retrofit

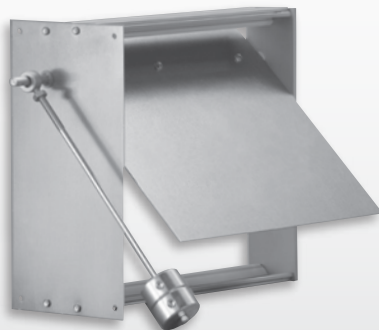




Power Open /
Power Close



Power Close /
Spring Return



Rectangular
Bypass

Power Open / Power Close

- For use as zone or bypass damper
- 24 VAC 4 VA universal operation

		Height in Inches*				
		8	10	12	14	16
Width in Inches	8	100808	—	—	—	—
	10	101008	101010	101012	101014	—
	12	101208	101210	101212	101214	—
	14	101408	101410	101412	101414	—
	16	101608	101610	101612	101614	101616
	18	101808	101810	101812	101814	101816
	20	102008	102010	102012	102014	102016
	22	102208	102210	102212	102214	102216
	24	102408	102410	102412	102414	102416
	26	102608	102610	102612	102614	102616
	28	—	—	—	102814	102816
30	—	—	—	103014	103016	

All motors are mounted on the Height Dimension

* Larger heights available. Contact factory for availability.

Power Close / Spring Return

- 2 wire installation
- 24 VAC 8 VA universal operation

		Height in Inches*				
		8	10	12	14	16
Width in Inches	8	110808	—	—	—	—
	10	111008	111010	111012	111014	—
	12	111208	111210	111212	111214	—
	14	111408	111410	111412	111414	—
	16	111608	111610	111612	111614	111616
	18	111808	111810	111812	111814	111816
	20	112008	112010	112012	112014	112016
	22	112208	112210	112212	112214	112216
	24	112408	112410	112412	112414	112416
	26	112608	112610	112612	112614	112616
	28	—	—	—	112814	112816
30	—	—	—	113014	113016	

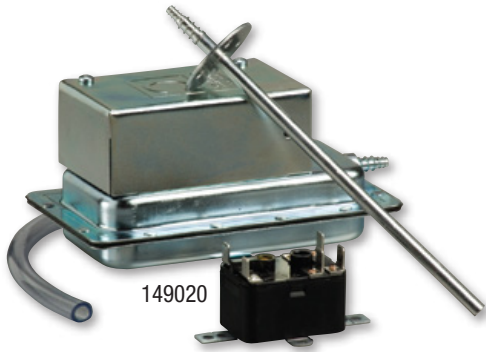
All motors are mounted on the Height Dimension

* Larger heights available. Contact factory for availability.

Rectangular Static Bypass

		Height in Inches		
		8	10	12
Width in Inches	12	131208	131210	131212
	20	132008	132010	—





Braeburn Zoning Accessories are designed to give years of performance in demanding zoning applications. Complete the HVAC installation with the full line of Braeburn thermostats and guards.

149020 Static Pressure Control

The Braeburn static pressure control is designed to mount on vertical surfaces. Powered from the zone panel transformer, this unit automatically controls the plenum bypass damper by monitoring system pressure as zones close and open.

Features

- Used to control plenum bypass air volume
- Reduces bypass problems in mismatched zones
- Includes relay and measuring pitot tube

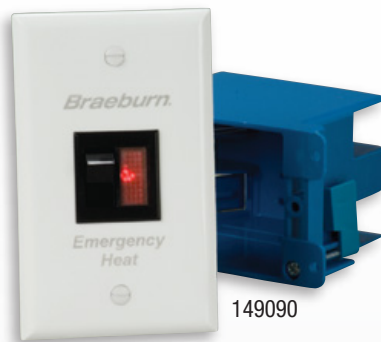


149040 Zoning System Transformer

Braeburn zoning transformers have 120 VAC input and 24 VAC output. UL listed and convenient mounting features for easy installation.

Features

- 40 VA, 120 VAC
- Includes mounting plate



Emergency Heat Switch Kit

These kits are the finishing touch to any zoning system installation. More convenient than the remote switch on the zone panel, both kits include a laser engraved wall plate and handy box.

Features

- 149090 features a commercial quality lighted rocker switch
- 149091 features a standard switch



Replacement Parts

149125 Replacement Motor for PO/PC Dampers (Manufactured 2012 to June 2019)

149126 Replacement Motor for Round PO/PC Dampers (Manufactured after June 2019)

149127 Replacement Motor for Rectangular PO/PC Dampers (Manufactured after June 2019)

149145 Replacement Motor for Spring Return (SR) Dampers (Manufactured after 2012)

149156 Replacement Supply Air Sensor

149160 Barometric Bypass Damper Counterweight



Zone Panel Application Guide

Model	Zones	Staging	Thermostats	Dampers	Power	Panel Status LED's	Supply Air Sensor Capable	Outdoor Sensor Capable	Configuration	Staging
140202	2-Zone	1H/1C	Conventional	2 or 3-Wire	24 VAC	Power, Dampers	-	-	Dip-Switch	Time
140303	3-Zone	3H/2C	Conventional	2 or 3-Wire	24 VAC	Power, Dampers, Equipment	Yes (included)	-	Dip-Switch	Time
140221	2-Zone	2H/1C	Conventional or Heat Pump	2 or 3-Wire	24 VAC	Power, Dampers, Equipment	-	Yes	Installer Menu	Time, Zones or Thermostats
140332	3-Zone	3H/2C	Conventional or Heat Pump	2 or 3-Wire	24 VAC	Power, Dampers, Equipment	Yes (included)	Yes	Installer Menu	Time, Zones or Thermostats
140404	4-Zone Expandable*	4H/2C	Conventional or Heat Pump	2 or 3-Wire	24 VAC	Power, Dampers, Equipment	Yes (included)	Yes	Installer Menu	Time, Zones or Thermostats

*Expand up to 32 zones with 140424 2-zone expander panel.

Zone Panel Key Features

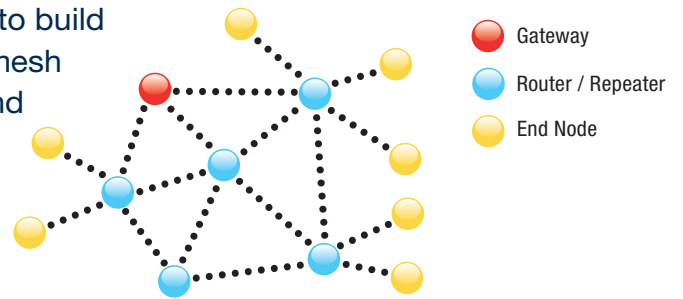
Cross Reference

Model	Display/ Size	Push-in Wire Terminals	2-Stage Fan Control (G2)	Adjustable Fan Purge	System Reset Button	Test Mode	Fire Alarm Terminals	Honeywell®	Zone-First®	AprilAire®
140202	-	-	-	-	-	-	-	-	MMP2	6202
140303	LED	-	Yes	Yes	-	-	-	-	MMP3 MMZ3	6203, 6303
140221	3 sq. in.	Yes	-	Yes	Yes	Yes	-	HZ211	-	6302
140332	5.5 sq. in.	Yes	Yes	Yes	Yes	Yes	-	HZ311 HZ332	H32, H32P	6303, 6403
140404	5.5 sq. in.	Yes	Yes	Yes	Yes	Yes	Yes	HZ432	MZP4, MZS4, MDP3	6404

Verify specific application requirements. All trademarks are the property of their respective owners. Product specifications may change without notice.

Wireless Mesh Networks

Salus products use proven Zigbee wireless technology to build **high reliability** and **low-power** consumption wireless mesh networks. These mesh networks are **self-organizing** and **self-healing**, with collision avoidance for reliability and 128 bit **encryption for security**. Salus Wireless Controls fall into three categories of device, which include:



1 Gateways - Gateways create, maintain, and control the wireless network.

Every Salus wireless network requires a gateway, and there may only be one gateway for each network created. This gateway can be connected via ethernet cable or Wi-Fi to allow internet access and remote control via the mobile app and cloud.

2 Routers / Repeaters - Routers are the devices that create the mesh.

They communicate bidirectionally, extending the coverage of the network and creating alternate pathways for data. These operations require higher power consumption, therefore routers are hardwired.



Look for the Repeater indicator!

3 End Nodes - All other devices will be end nodes. These are typically battery-operated sensing and control devices. These devices consume far less power, allowing for long battery life. However, they will not extend the range of the network. When designing your Salus wireless mesh network, make sure to consider the need for routers. As a general rule, we recommend adding a router every 75-100 feet, or wherever signal becomes weak.

Example Applications Available!



Smart Home, page 39



Smart Building, page 41

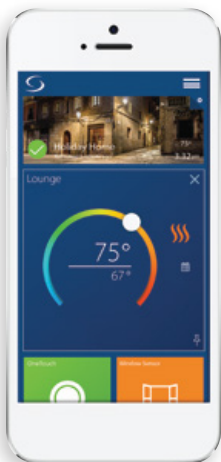


SG888ZBWH
Gateway

Gateway

Features

- Hosts the local Zigbee network for up to 100 devices
- Can be connected via Wi-Fi or ethernet to enable remote access to your devices via the Salus Smart Home App
- Built in rules engine allows creation of custom automations for connected devices
- Multi-Color LED ring displays status
- Compatible with all Salus wireless devices

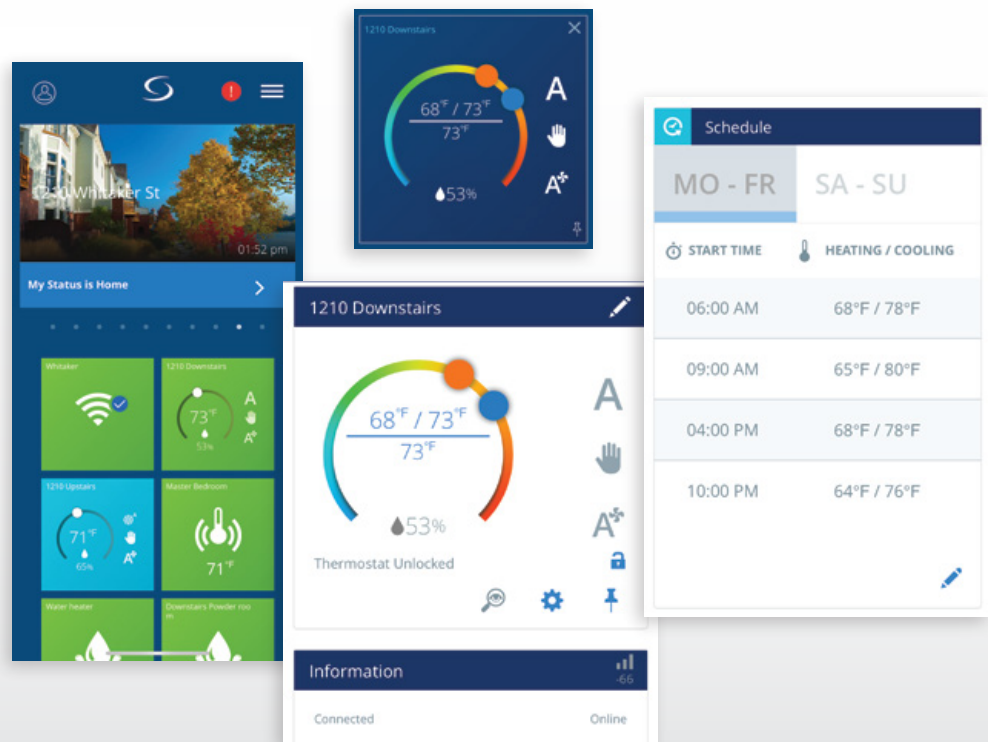


Salus Smart Home App

Smart Home App **FREE**

Features

- Remotely monitor and control your Salus devices
- Get text and e-mail alerts for important changes to your devices
- View historical information on your connected devices
- Create custom automations to control how your devices interact with each other
- Connect a virtually limitless number of devices and locations to one account





ST100ZB - 120 / 240V
ST101ZB - 24 Volt



SA401X -
Cover Plate (Optional)
 Dimensions: 5.9"W x 5.0"H

Wired Fan Coil Thermostats

Features

- Compatible with 2 pipe or 4 pipe systems
- 3 Speed fan control
- Optional pipe sensor
- Auto changeover
- 7 Day, 5/2 Day or non-programmable
- Relative humidity sensor
- Auxiliary heat output
- Accessory output for humidifier, dehumidifier or ERV
- Optional pipe sensor
- Adjustable minimum off time
- Filter service reminder
- Multi-level keypad lockout
- Adjustable high and low setpoint limits
- Purge function

Additional Features

- Easy wire push button terminals (ST101ZB only)
- Line voltage wire leads (ST100ZB only)
- Automatic voltage selection (ST100ZB only)

Optional Features (Requires SG888ZBWH)

- Remote access from Salus Smart Home app on smart phone and tablet
- Enable temperature alerts via SMS or e-mail

Works with:



Gateway
page 24



Remote Sensor
page 10



Temperature
Sensor, page 28





SC102ZB - Control



ST103ZB - Remote

Wireless Fan Coil Thermostat Kit

NOTE: Both components of the kit are required for operation.

Control Features

- Compatible with 2 or 4 pipe systems
- Auxiliary heat output
- Accessory output for humidifier, dehumidifier or ERV
- Optional pipe sensor
- Adjustable minimum off time
- Easy wire push button terminals
- Filter service reminder
- Multi-level keypad lockout
- Purge function
- Display timeout
- Optional external antenna connection

Remote Features

- Remotely controls the SC102ZB control
- Allows relocation of the temperature reading to a better comfort location
- Relative humidity sensor
- 7 Day, 5/2 Day or non-programmable
- Adjustable high and low setpoint limits
- Separate multi-level keypad lockout option

Optional Features (Requires SG888ZBWH)

- Remote access from Salus Smart Home app on smart phone and tablet
- Enable temperature alerts via SMS or e-mail

Works with:



Gateway
page 24

Temperature
Sensor, page 28

Indoor Remote
Sensor, page 10

Remote Sensor
page 10

External Antenna
page 28





ST898ZB - 3H / 2C Heat Pump
2H / 2C Conventional



ST898ZBR - 3H / 2C Heat Pump
2H / 2C Conventional
with Router Option*

Optima S Thermostat

Features

- Touchscreen interface
- Auto changeover
- Easy wire push button terminals
- 7 Day, 5/2 Day, or non-programmable
- Adjustable high and low setpoint limits
- Frost protect setting
- Temperature reading offset
- Adjustable brightness
- Relative humidity reading
- Always on display
- Display timeout or dimming
- Multi-Lingual interface

Additional Feature

(ST898ZBR Router Option Only)

- Acts as a repeater to extend mesh network*

Optional Features

(Requires SG888ZBWH)

- Remote access from Salus Smart Home app on smart phone and tablet
- Enable temperature alerts via SMS or e-mail
- Set up custom automations with the rules engine

* Requires a common (C) wire connection

Works with:



Gateway
page 24



Temperature
Sensor, page 28

Smart Home and Building Accessories



SC824ZB Wireless Smart Relay

- Wirelessly switch up to 3A loads at 24 VAC
- Can be used as dry contacts
- Multi-Color LED indicator
- Configurable fall-back states for loss of power or communication
- Two sets of power terminals
- Switches based on a schedule or based on custom automations



SX885ZBLG Wireless Smart Plug and Repeater

- Remotely control 120V loads
- Monitor power usage
- Acts as a Zigbee repeater to extend the mesh network
- Rated to 16A (resistive) at 120VAC
- Switches based on a schedule or based on custom automations
- Manual on/off button



SS909ZBWW Temperature Sensor

- Wirelessly monitor temperature in a space
- Remotely sense temperature for an associated thermostat
- Wall mount or desk mount with included stand
- Works standalone or with a Salus thermostat
- Small, compact design



SS912ZBWW Window / Door Sensor

- Slim profile works well on doors or windows with space constraints
- Monitor door and window access remotely
- Automate thermostat adjustments when doors or windows open



A8RFA Zigbee Wireless External Antenna

Allows communication where a device is mounted inside a metal cabinet

Requires:



Gateway
page 24

A8RFA Zigbee Wireless External Antenna Works with:



Wireless Pump
Relay Controls
page 33



Fan Coil Controller
page 26



Wireless Valve
Relay Control, page 35



Salus Leak Detection and Protection Systems

Nearly every building or structure is equipped with running water. Water is essential to many of our daily activities and sustains our life. Unfortunately, with all of the benefits that running water provides, it also brings risk. Statistics show that water leaks are some of the most frequent and expensive sources of damage to homes and buildings. Check out these statistics on water leaks in the US*:

Water Claims by the Numbers



*According to the Insurance Information Institute

What can we do to Mitigate the Risk? Detect it, Protect it and Connect it!

Detect it!



**SS901ZB -
Leak Sensor**

Wireless Leak Sensors

Features

- Detects water and wirelessly alerts the system
- Long battery life
- Built in low battery and tamper alerts
- Included holster allows vertical mounting
- Included leads extend sensing range

NOTE: Gateway required for sensor operation.



Salus Leak Detection systems can be used to **protect your home or building** from thousands of dollars in damage. In some areas, you may even **qualify for discounts or rebates** on insurance premiums by installing such a system!

Protect it!



SC904ZB - 3/4" NPT
SC907ZB - 1" NPT
SC908ZB - 1 1/4" NPT

Inline Water Shutoff Valves

Features

- Certified lead-free
- Female NPT connections
- Power adapter included
- LED status indicator
- Manual override button
- Manual clutch release

NOTE: Gateway required for valve operation.



SC906ZB

C/PVC Shutoff Controller

Features

- Fits 3/4" and 1" Spears CWV PVC ball valves
- Installs without cutting any pipes
- Power adapter included
- LED status indicator
- Manual override button
- Manual clutch release

NOTE: Gateway required for valve operation.

Connect it!



Gateway, page 24

Gateway and Smart Home App

The gateway serves as the backbone of your Salus Leak Detection and Protection system, connecting all of the sensors and shutoff valves together in a robust wireless mesh that ensures constant communication and awareness of all devices throughout the building. The Salus Smart Home App can be used to remotely monitor and control all connected devices, including configuring custom alerts and automations to ensure immediate action whenever water is detected.



Wireless Hydronic Systems

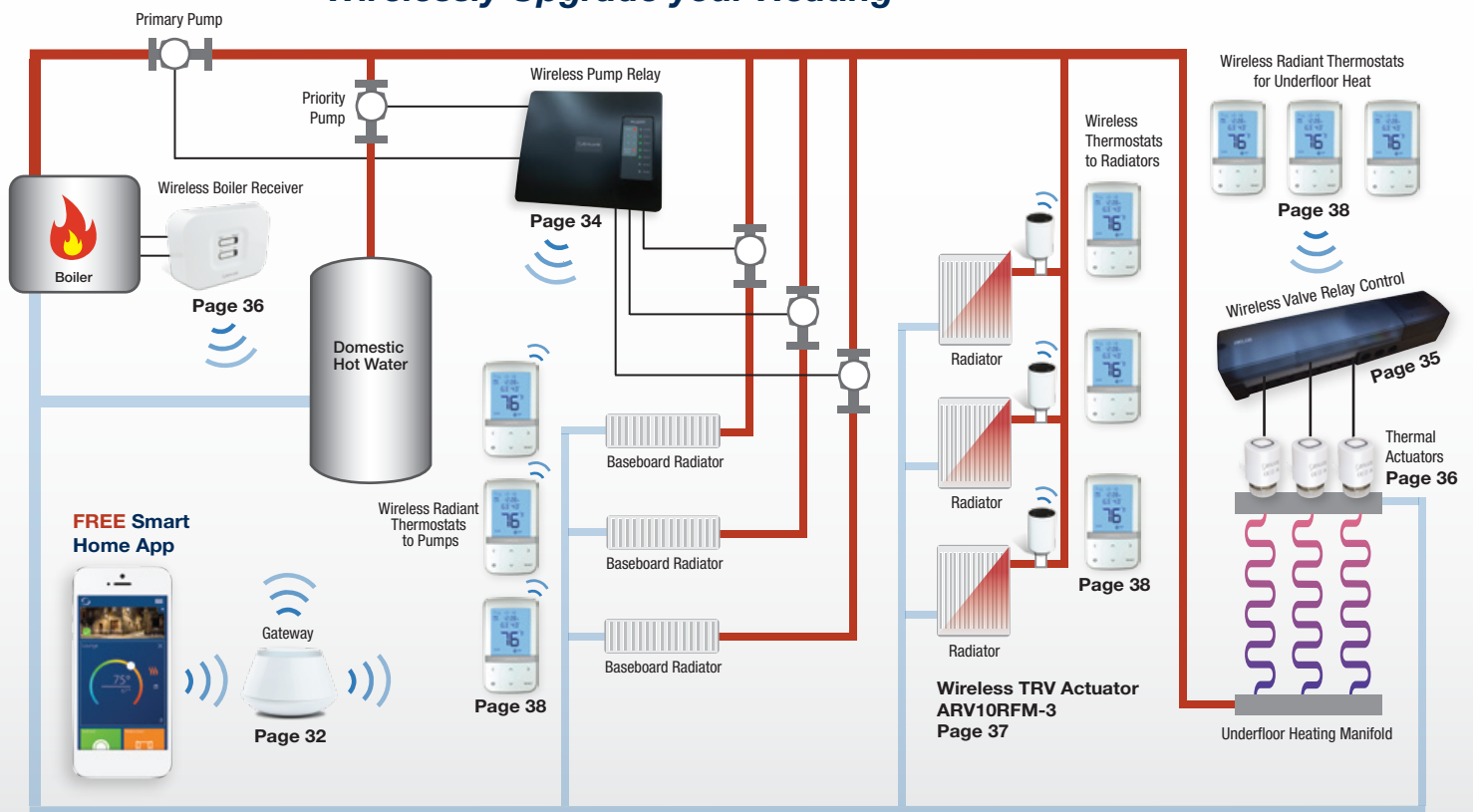
In addition to quality controls for Wired Hydronic systems, Salus offers an innovative Wireless Hydronic System that can improve control and comfort while facilitating smoother installations and enabling Smart features.

Energy Efficient – Intelligent control algorithms, customizable programs and limitless automation opportunities significantly reduce energy consumption by eliminating overheating or underheating for a greener and more economical building environment.

A Smart Upgrade – Integrate many devices on the network so that your equipment works together to maximize benefits to you. Remote monitoring and control is enabled by the Salus Smart Home app, which can present both real time and historical data so you can take your smart home or building to the next level!

Cost Effective and Easy to Install – Eliminates the need to run wires to many devices on the network. Guided setup and account configuration through the Salus Smart Home app helps to simplify installation and configuration. Just power up and connect the device to configure in just a few minutes!

Wirelessly Upgrade your Heating



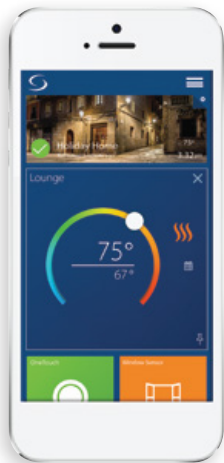


SG888ZBWH
Gateway

Gateway

Features

- Hosts the local Zigbee network for up to 100 devices
- Can be connected via Wi-Fi or ethernet to enable remote access to your devices via the Salus Smart Home App
- Built in rules engine allows creation of custom automations for connected devices
- Multi-Color LED ring displays status
- Compatible with all Salus wireless devices

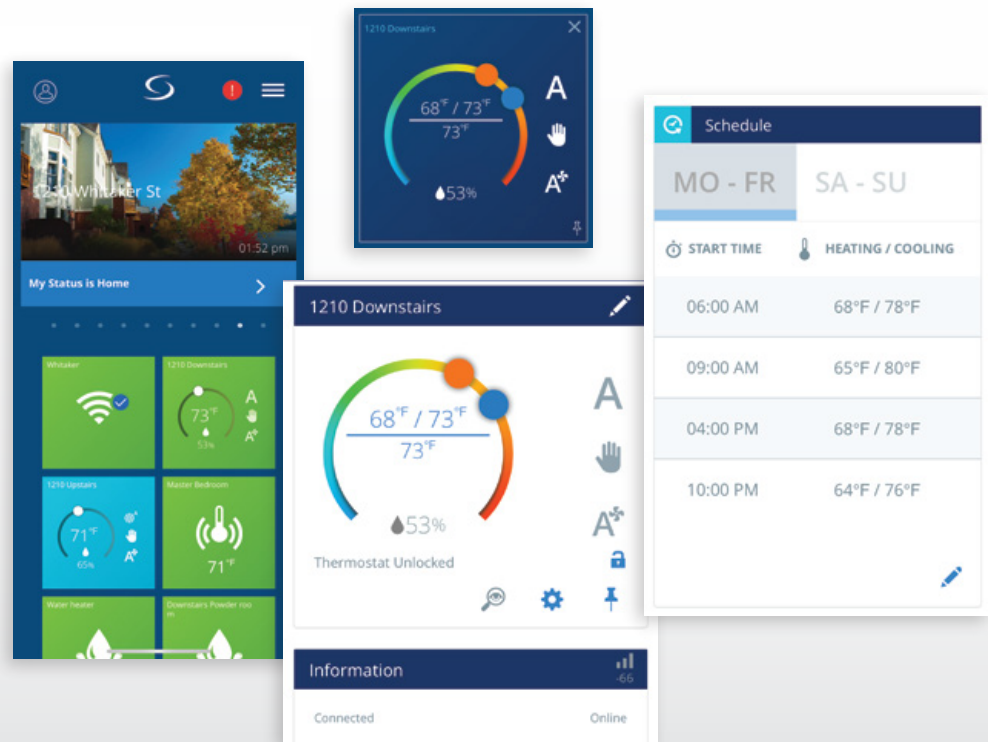


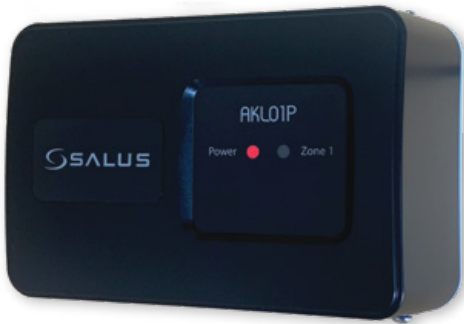
Salus Smart Home App

Smart Home App **FREE**

Features

- Remotely monitor and control your Salus devices
- Get text and e-mail alerts for important changes to your devices
- View historical information on your connected devices
- Create custom automations to control how your devices interact with each other
- Connect a virtually limitless number of devices and locations to one account





AKL01P - 1 Zone
Wired

Pump Relay Controls

Features

- Switches 120V pumps at up to 1/6 HP
- Dry contacts XX

Works with:



Hydronic
Thermostat
page 5

Heat Only
Thermostat
page 3

Mechanical
Thermostat
page 3



AKL01PRF - 1 Zone
Wireless

Additional Features (AKL01PRF)

- Wirelessly communicates with zone thermostats
- Repeats wireless network signal

Wireless Model AKL01PRF Requires:



Gateway
page 32

Radiant Thermostat
page 38

Replaces			
Caleffi	Resideo	Taco	Tekmar
ZSR101	HPSR101	SR501	301P



AKLO4P - 4 Zone
Wired

AKLO6P - 6 Zone
Wired



AKLO4PRF - 4 Zone
Wireless

AKLO6PRF - 6 Zone
Wireless

Pump Relay Controls

Features

- Aquastat input contacts ZC / N
- Purge option
- Pump exercise option
- Priority zone for domestic hot water
- Primary pump contacts
- Additional dry contacts AUX - E/S

Works with:



Hydronic
Thermostat
page 5

Heat Only
Thermostat
page 3

Mechanical
Thermostat
page 3

Additional Features (AKLO4PRF / AKLO6PRF)

- Wirelessly communicates with Zone Thermostats
- Repeats wireless network signal
- Optional wired thermostat in zone 1 for priority hot water

Wireless Models Require:



Gateway
page 32



Radiant Thermostat
page 38

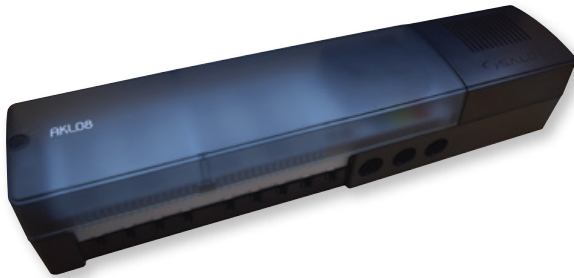
Works with:



External Antenna
page 28

Replaces			
Caleffi	Resideo	Taco	Tekmar
ZSR103	HPSR103	SR503, SR503-EXP	302P
ZSR104	HPSR104	SR504, SR504-EXP	303P
ZSR106	HPSR106	SR506, SR506-EXP	304P 306P





**AKL08 - 8 Zone
Wired**

Valve Relay Controls

Features

- Switches 24VAC zone valves or actuators
- Internal 24VAC transformer rated at 80VA
- Easy wire quick connect wire terminals
- Up to 4 actuators per zone
- Compatible with NO or NC actuators
- Pump delay
- Boiler delay

Works with:



Thermal Actuators
page 36



Hydronic
Thermostat
page 5



Heat Only
Thermostat
page 3



Mechanical
Thermostat
page 3



**AKL08RF - 8 Zone
Wireless**

Additional Features (AKL08RF)

- Wirelessly communicates with zone thermostats
- Repeats wireless network signal

Requires:



Gateway
page 32



Radiant Thermostat
page 38

**Works
with:**



External Antenna
page 28

Replaces

Caleffi	Resideo	Taco	Tekmar
ZVR103	HPZC103	ZVC403	303V
ZVR104	HPZC104	ZVC404	304V
ZVR106	HPZC105	ZVC405	305V
	HPZC106	ZVC406	306V





A30NC24 -
Normally Closed
A30NC24EW -
With End Switch



A30N024 -
Normally Open

24V Thermal Actuators

Features

- 30mm threads
- High quality wax element
- 100N spring force
- Open/close indicator
- Low 2W power consumption
- End switch leads (A30NC24EW only)

Works with:



Valve Relay Controls
page 35



AX10RF - Wireless Boiler Receiver

Wireless Boiler Receiver

Features

- Wirelessly engages boiler on any call for heat
- Can be configured as an individual zone receiver for motorized zone valves
- Manual override option
- LED indication of boiler state
- Repeats wireless network signal

Requires:



Gateway
page 32



Radiant Thermostat
page 38





ARV10RFM-3
Wireless TRV Actuator

Wireless Thermostatic Radiator Valve Actuator

ARV10RFM-3

- Compatible with hot water or steam systems
- M30 x 1.5 threads
- Included adapter to Danfoss RA type valves
- Staged modulation
- Manual override
- Fail safe function
- Keypad lock
- Pair up to 6 with one AWRT10RF thermostat



ATVA407

ATVA407 Tamper Proof Kit for TRV Actuator

- Discourages tampering with TRV actuator



ATVA408

ATVA408 External Power Pack for TRV Actuator

- Significantly Extends Battery Life of Wireless TRV Actuators
- Slides onto TRV Actuators for Easy Installation

Requires:



Gateway
page 32



Radiant Thermostat
page 38





**AWRT10RF -
Wireless Radiant
Thermostat**

Requires:



Gateway
page



AFTS40M

Wireless Radiant Thermostat

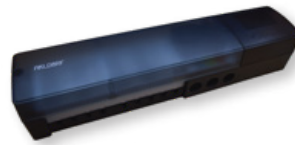
Features

- Wirelessly communicates with other system components
- Floor/slab sensor terminals
- Programmable
- Temperature Limits
- Keypad lockout
- Relative humidity display

Works with:



Wireless Pump
Relay Controls, page 33



Wireless Valve
Relay Control, page 35



Boiler Receiver
page 36



TRV Actuator
page 37



Floor Slab Sensor
page 38



Smart Relay
page 28

AFTS40M Floor / Slab Sensor

- 10k Ω type 2 thermistor
- Suitable for use in floor/slab applications
- Can be used as a pipe sensor for fan coil thermostats
- 4m wire length

Works with:



Radiant Thermostat
page 38



Fan Coil Thermostats
page 25



Hydronic
Thermostat, page 5



A Whole-Home Upgrade

Salus Smart Home systems can upgrade every aspect of your home. Save energy and improve comfort with intelligent heating and cooling controls, automate appliances with smart plugs and relays, and secure peace of mind by keeping an eye on your doors, windows, and plumbing system. If your gateway is connected to the internet, you can even access and control your entire Smart Home remotely from anywhere in the world when you have an internet or data connection!

An Easy Entry to Smart Homes

The Salus Smart Home application is completely free to use and requires no setup or annual usage fee. Guided installation and full-time technical support staff help to ensure a seamless experience for your first entry into the complex world of home automation. Cost effective solutions to automate each category of home device - a connected Smart Home has never been more within reach!

Automate All Your Appliances

Customizable automations allow you to use virtually any Salus device condition or action to initiate or act on user-defined commands through the application. An easy built-in automations configuration tool walks you through the process to help set up your desired automation in a matter of minutes!

Fits the Whole Family

Once configured, you can share access to the Salus Smart Home application with your spouse, children, guests, or anyone else! Simply enter their e-mail address to send them an account invitation or extend access to your system on their pre-existing Salus Smart Home app. Access can be granted at the Owner, Family, and Guest level. Guest level access can be made temporary for those short-time visitors!

Tailored to Your Needs

Customize your Smart Home dashboard by renaming connected devices, pinning them to or hiding them from the dashboard and organizing those devices in folders. Each user's view is completely custom to their account, so there's no need to view it just the way your cohabitants like it, you can tailor your dashboard preferences specifically to your desires.

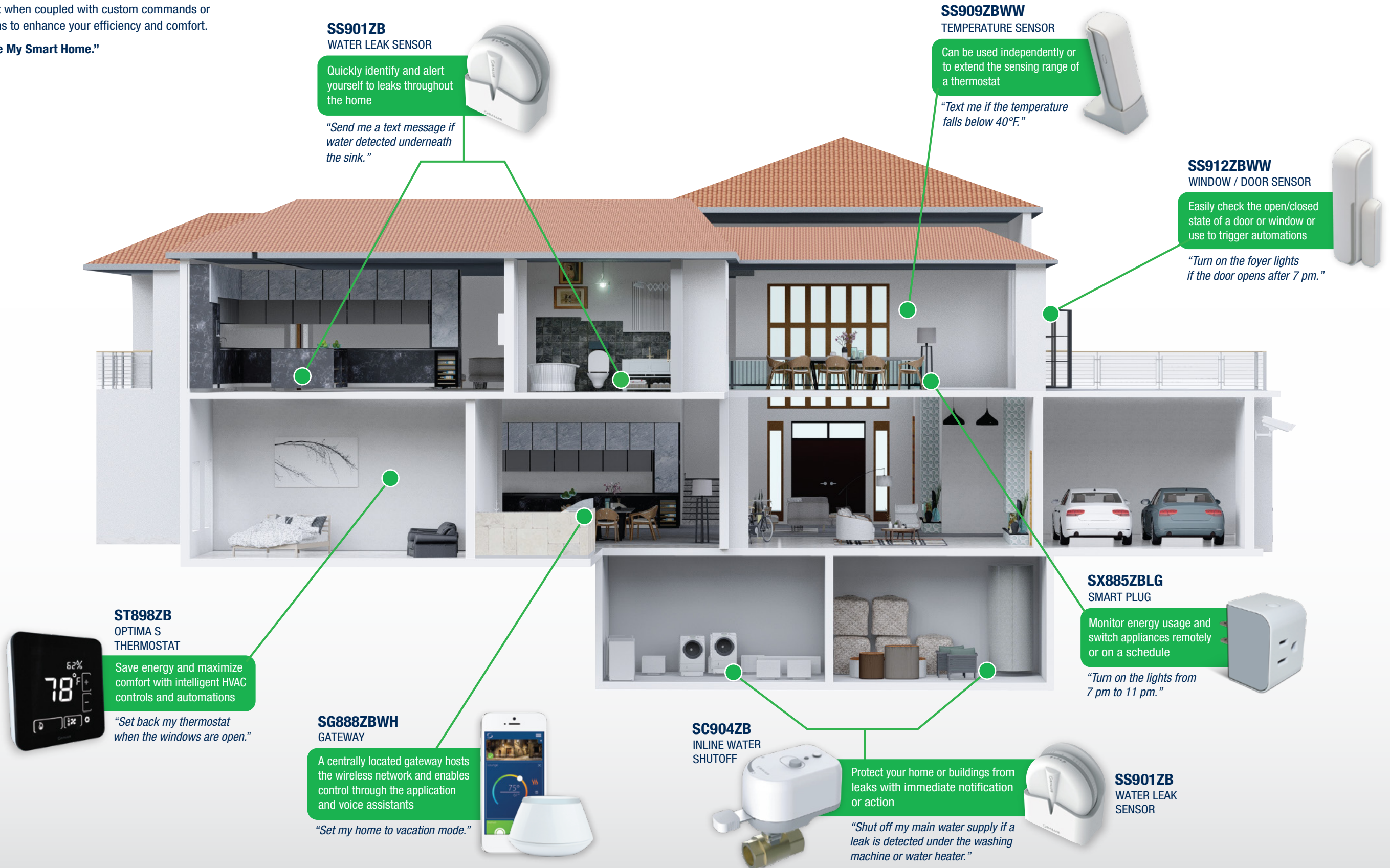
Low Maintenance

Salus Smart Home devices need very little upkeep. Most devices operate without batteries. Those devices that take batteries will use widely available batteries that are easy to purchase and change at the device. Expected battery life for connected devices is years, and devices alert you to low battery or offline conditions to keep you connected. The self-healing nature of the wireless technology ensures that communication will adapt to changing conditions to optimize connectivity.

SALUS® Smart Homes

* Works best when coupled with custom commands or automations to enhance your efficiency and comfort.

"Automate My Smart Home."



SS901ZB
WATER LEAK SENSOR

Quickly identify and alert yourself to leaks throughout the home

"Send me a text message if water detected underneath the sink."

SS909ZBWW
TEMPERATURE SENSOR

Can be used independently or to extend the sensing range of a thermostat

"Text me if the temperature falls below 40°F."

SS912ZBWW
WINDOW / DOOR SENSOR

Easily check the open/closed state of a door or window or use to trigger automations

"Turn on the foyer lights if the door opens after 7 pm."

ST898ZB
OPTIMA S
THERMOSTAT

Save energy and maximize comfort with intelligent HVAC controls and automations

"Set back my thermostat when the windows are open."

SG888ZBWH
GATEWAY

A centrally located gateway hosts the wireless network and enables control through the application and voice assistants

"Set my home to vacation mode."

SC904ZB
INLINE WATER SHUTOFF

Protect your home or buildings from leaks with immediate notification or action

"Shut off my main water supply if a leak is detected under the washing machine or water heater."

SX885ZBLG
SMART PLUG

Monitor energy usage and switch appliances remotely or on a schedule

"Turn on the lights from 7 pm to 11 pm."

SS901ZB
WATER LEAK SENSOR

"Alert me if the tenant tampers with the thermostat wiring."

This sleek modern thermostat has a multi-lingual display, many smart features and even functions as a wireless repeater to strengthen the mesh throughout the building



ST898ZBR
OPTIMA S
THERMOSTAT
WITH REPEATER

"Don't run a cooling call if the building loop is hot."

Add a smart upgrade to your line voltage or low voltage fan coil units



ST100ZB - Line Voltage
ST101ZB - 24 Volt
FAN COIL THERMOSTATS

SX885ZBLG
SMART PLUG
AND REPEATER

Extends network range while monitoring energy usage

"How much electricity is the lamp in unit 201 using?"



SS901ZB
WATER LEAK SENSOR

Avoid costly multi-level leaks with early detection and alerts to building management

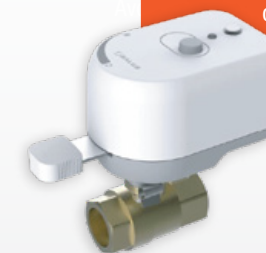
"Notify building staff when a leak is detected in unit 201."



SC904ZB
INLINE WATER SHUTOFF

Avert disaster by notifying staff and reacting quickly to leaks by shutting off supply to individual units, preventing building-wide water damage

"Shut off the water when a leak is detected in unit 201."



SS909ZBWW
TEMPERATURE SENSOR

Can be used to extend the sensing range of a thermostat controlling high traffic areas

"Keep the gym at 72°F during open hours."



SG888ZBWH
GATEWAY

One gateway can host up to 100 devices, and when intelligently located, can serve entire buildings!

"Set unit 201 to unoccupied mode."



SS912ZBWW
WINDOW / DOOR SENSOR

Building managers can easily monitor the status of doors and windows

"Alert the staff if gym cooling unit runs while the window is open."



* Works best when coupled with custom commands or automations to enhance your efficiency and comfort.

"Automate My Smart Building."



Scalable to Any Building

Salus Smart Building systems can be installed in buildings of any size - from small multi-family or light commercial buildings to high-rise residential or commercial buildings. Each gateway can accommodate up to 100 devices, and there is no limit to the number of gateways added to an account. The name of each device is customizable, and you can group devices into folders for ease of management and to prevent searching for a specific device in the list. Where multiple Salus Smart Buildings systems are implemented in the same building, intelligent channel selection and easily adjustable wireless settings prevent interference issues.

Versatile Enough for Any Application

With solutions for HVAC, hydronic heating, leak detection, electrical switching, and more, Salus Smart Building systems can offer a complete upgrade to all of your building utilities. Mix and match any of the components desired, and upgrade your system at any time by quickly adding additional controls whenever necessary or desired. A system can be configured without internet access, if desired, and implemented in a local only configuration. Should you choose to connect the system to the internet, the only point of access is the gateway, which can be connected via Ethernet for improved security. As the rest of the devices on the wireless mesh do not communicate using Wi-Fi, it is even usable in applications where Wi-Fi networks are at risk of being compromised.

A Robust Wireless Mesh

The proven ZigBee wireless mesh technology is self-organizing and self-healing meaning that devices always find the best signal path back to the gateway. When a path of communication is interrupted, the network will reorganize so that devices find the next available signal path, if present. This means there is no network downtime if a device is down while equipment is serviced, batteries are being replaced, or other unforeseen conditions. If network signal issues are encountered, a repeater device can be easily added into the mesh wherever necessary to improve signal in that area, and the mesh will re-organize to optimize communications.

Remotely Managed by Teams of Any Size

Once configured, share access to your Smart Building with building management to other team members. Varying levels of access are available to help ensure the integrity and security of your building systems. Temporary access can be extended to visitors or contractors who are visiting or servicing the building. All users can remotely monitor and control the systems using the free application on iOS, Android, or PC. The WebApp accessible on a PC browser is an ideal solution for front-desk or desktop control by the responsible staff.

Easily Installed and Serviced

Wireless technology eliminates the need to run wires between many of the controls. Guided setup and account configuration helps to simplify installation and configuration. Battery-operated devices require infrequent battery changes, use widely available batteries, and have easily accessible battery compartments. Built-in alerts, historical data, and customizable automations keep you informed and involved on the system health, allowing you to prevent and quickly resolve issues.

Superior Value for Your Building

Connecting, configuring, and monitoring devices is completely free using the Salus Smart Home application on iOS, Android, or PC. There's no need to purchase a costly building energy management system, just set up a Salus wireless mesh network and start managing your building immediately!



BlueLink Service Connect App



BlueLink Service Connect® is a free app that lets contractors send invitations to their existing BlueLink customers, requesting temporary or permanent access to their account. Once access is granted, contractors can view, modify and manage the approved thermostats remotely, without the need for a costly service call.

Better. Brighter. Bolder.

Braeburn is the value alternative for a wide variety of indoor and smart home control products. Founded in 2001, our corporate headquarters is located in Montgomery, Illinois – just west of Chicago. We are committed to providing you with the precision products you would expect from a world class company. Our manufacturing facility is ISO 9001 and QS9000 rated for the highest assurance of quality. Braeburn provides solutions to lower energy costs and increase comfort in any home or business environment.

Toll-Free 866.268.5599 (U.S. and Canada)
+1.630.844.1968 (Outside the U.S. and Canada)
Fax 866.268.8897 • www.braeburnonline.com

Apple and the Apple logo are trademarks of Apple Inc., registered in the U.S. and other countries.
App Store is a service mark of Apple Inc. Google and Google Play are trademarks of Google LLC.

Braeburn Systems LLC • 2215 Cornell Avenue • Montgomery, IL 60538
©2025 Braeburn Systems LLC • All Rights Reserved • No. 100-200-28