

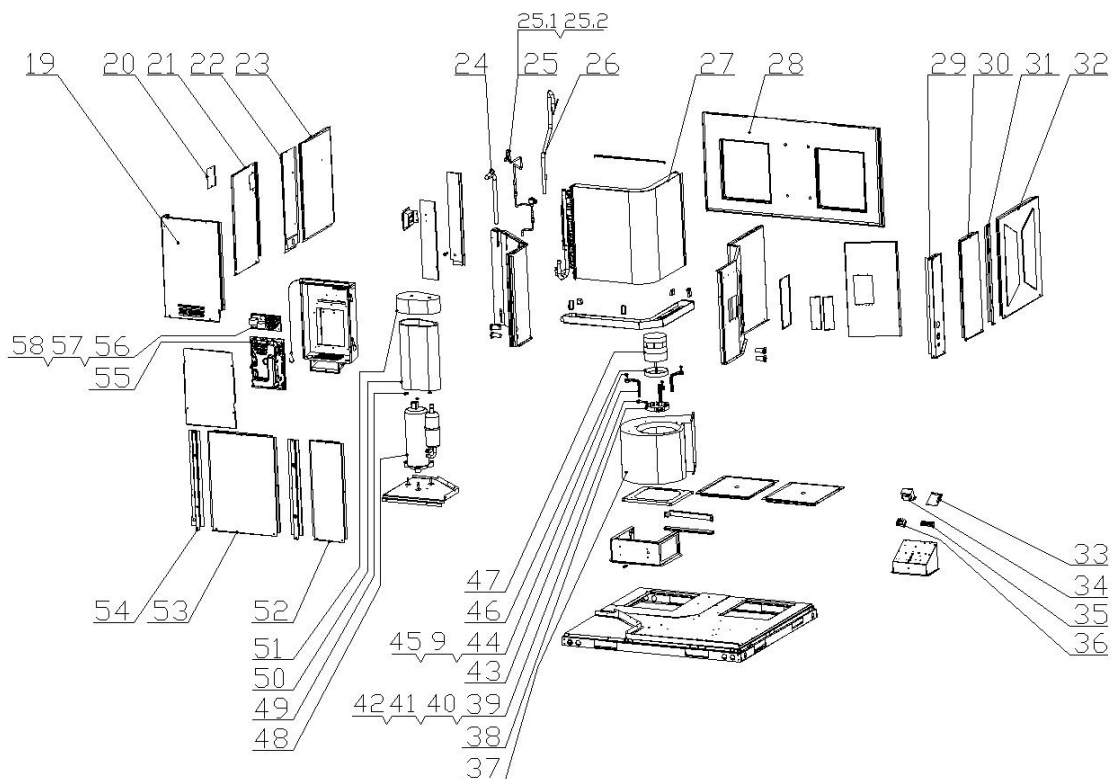
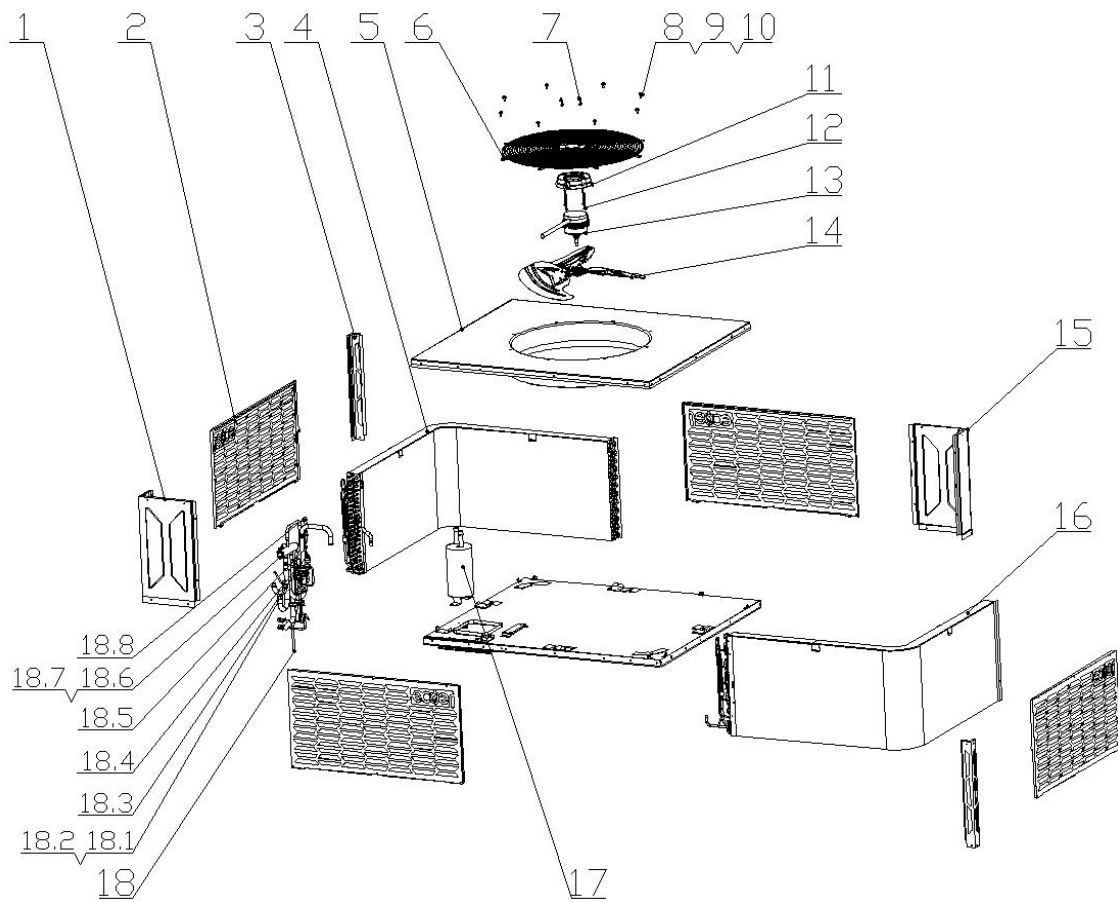


Parts List for Ecoer Inverter Ducted Packaged Heat Pump Units

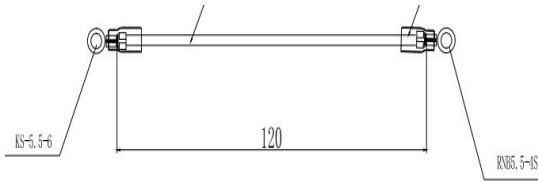
ERDA19H-60AAA

5Ton Packaged Heat Pump

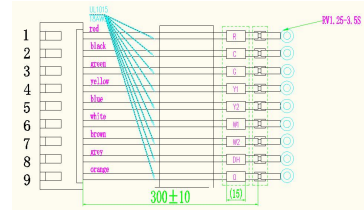




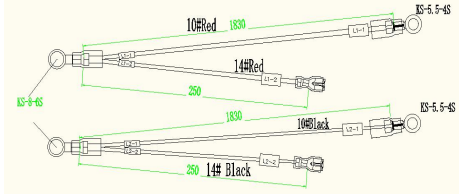
59



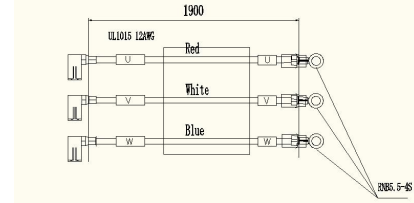
60



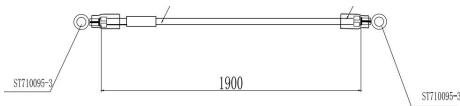
61



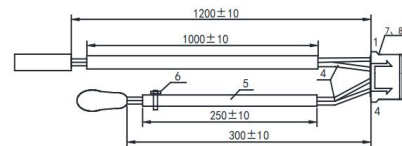
62



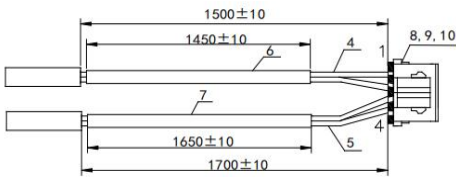
63



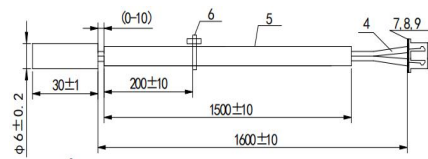
64



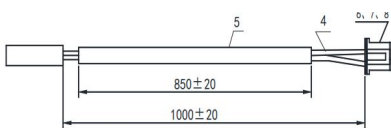
65



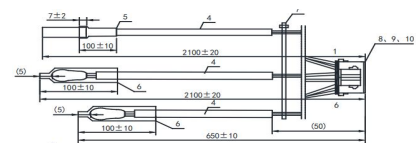
66



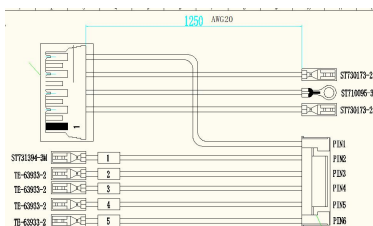
67



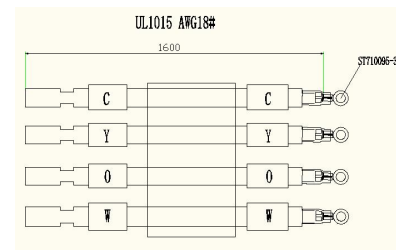
68



69



70



No.	Part Name	Quantity	Part code
1	Upper column 3	1	EAC2308300046
2	Condensation grille	4	EAC2308300045
3	Upper column 1	2	EAC2308300034
4	Condenser ass'y 1	1	EAC2312100030
5	Condensing fan cover	1	EAC2400200183
6	Fan grille	1	EAC2308300057
7	Cap nut	4	EAC2319100015
8	Hexagon head bolts with cross recess	8	EAC2319000019
9	Spring washers	11	EAC2319100026
10	Large flat washer	8	EAC2319100032
11	Motor support assembly	1	EAC230803381
12	Motor mounting bolts	4	EAC2319100013
13	Rooftop outdoor motor	1	EAC2323100005
14	Axial flow fan	1	EAC2308300042
15	Upper column 2	1	EAC2308300035
16	Condenser Part 2	1	EAC2312100044
17	Gas-liquid separator	1	EAC2312100029
18	Four-way valve assembly	1	EAC2312100032
18.1	The electromagnetic valve	1	EAC2312100005
18.1	The electromagnetic valve	1	EAC2312100005
18.2	Solenoid valve coil	1	EAC2309100030
18.3	Low Pressure sensor	1	EAC2309100033
18.4	High pressure sensor	1	EAC2309100032
18.5	High pressure switch	1	EAC2309100003
18.6	Four-way valve	1	EAC2312100003
18.7	Four-way valve coil	1	EAC2309100028
18.8	Fusible plug	1	EAC2312100028
19	Compressor chamber enclosure assembly	1	EAC2308300043
20	Needle valve sealing plate	1	EAC2308300052

No.	Part Name	Quantity	Part code
21	Compressor chamber enclosure 2	1	EAC2308300053
22	Side Panel Assembly 4	1	EAC2308300036
23	Side Panel Assembly 2	1	EAC2308300048
24	Pipe connection assembly	1	EAC2312100031
25	Electronic expansion valve pipe assembly	1	EAC2312100034
25.1	Electronic expansion valve	1	EAC2312100037
25.2	Electronic expansion valve coil	1	EAC2309100027
26	Suction pipe assembly	1	EAC2312100035
27	Evaporator component	1	EAC2312100036
28	Front panel assembly	1	EAC2308300018
29	Lower column assembly 2	1	EAC2308300015
30	Side Panel assembly 3	1	EAC2308300044
31	Lower column assembly 1	1	EAC2308300014
32	Side panel assembly 1	1	EAC2308300047
33	PCB ass'y	1	EAC230904222
34	Power transformer	1	ETFR020003
35	Nine-position indoor unit terminal block	1	ECON060503
36	Power terminal block	1	ECON060505
37	Centrifugal wind wheel	1	EAC2308300020
38	Motor clamp	1	EAC2308300023
39	Hexagon head bolts with cross recess	1	EAC2319000020
40	Nuts	1	EAC2319100024
41	Extra large washers	1	EAC2319100017
42	Spring washers	1	EAC2319100016
43	Motor mounting bracket assembly	3	EAC2308300022
44	Hexagon head bolts with cross recess	3	EAC2319000018
45	Extra large flat washers	3	EAC2319100027
46	Special cotton for indoor motor	1	EAC2316000002
47	Centrifugal fan motor	1	EAC2323100004
48	Rotary compressor	1	EAC2315100001
49	Flange Hexagon Nut	3	EAC2319100001

No.	Part Name	Quantity	Part code
50	Sound insulation cotton	1	EAC2316100019
51	Soundproof cotton hat	1	EAC2321100021
52	Rear panel assembly 1	1	EAC2308300049
53	Rear panel assembly 2	1	EAC2308300050
54	Lower column assembly 3	1	EAC2308300028
55	Motherboard component	1	EAC230904169
56	Filter board assembly	1	EAC230904102
57	Filter board connecting wire set	1	ECAB020003
58	Power Inductors	1	EIND080011
59	Ground wire	1	ECAB040003
60	9-bit wire	1	SCAB000156
61	power cable	1	ECAB000002
62	Compressor connecting wire	1	ECAB020004
63	Compressor ground wire	2	ECAB040002
64	TS TA Sensor	1	EAC2309100005
65	TL TH Sensor	1	EAC2309100023
66	TD Sensors	1	EAC2309100024
67	TL2 Sensor	1	EAC2309100025
68	T1, T2, T3 sensors	1	EAC2309100022
69	Motor connection line	1	EAC2309100017
70	CYOW signal line	1	ECAB050002

©2024 ECOER INC.

43671 Trade Center Place, Suite 100 Dulles, VA 20166 USA

Tel: 703-348-2538

www.ecoer.com