



## Parts List for Ecoer TDi Pro Series Air Handler Units

---

EAHATN-24BAA

2Ton Air Handler

EAHATN-36BAA

3Ton Air Handler

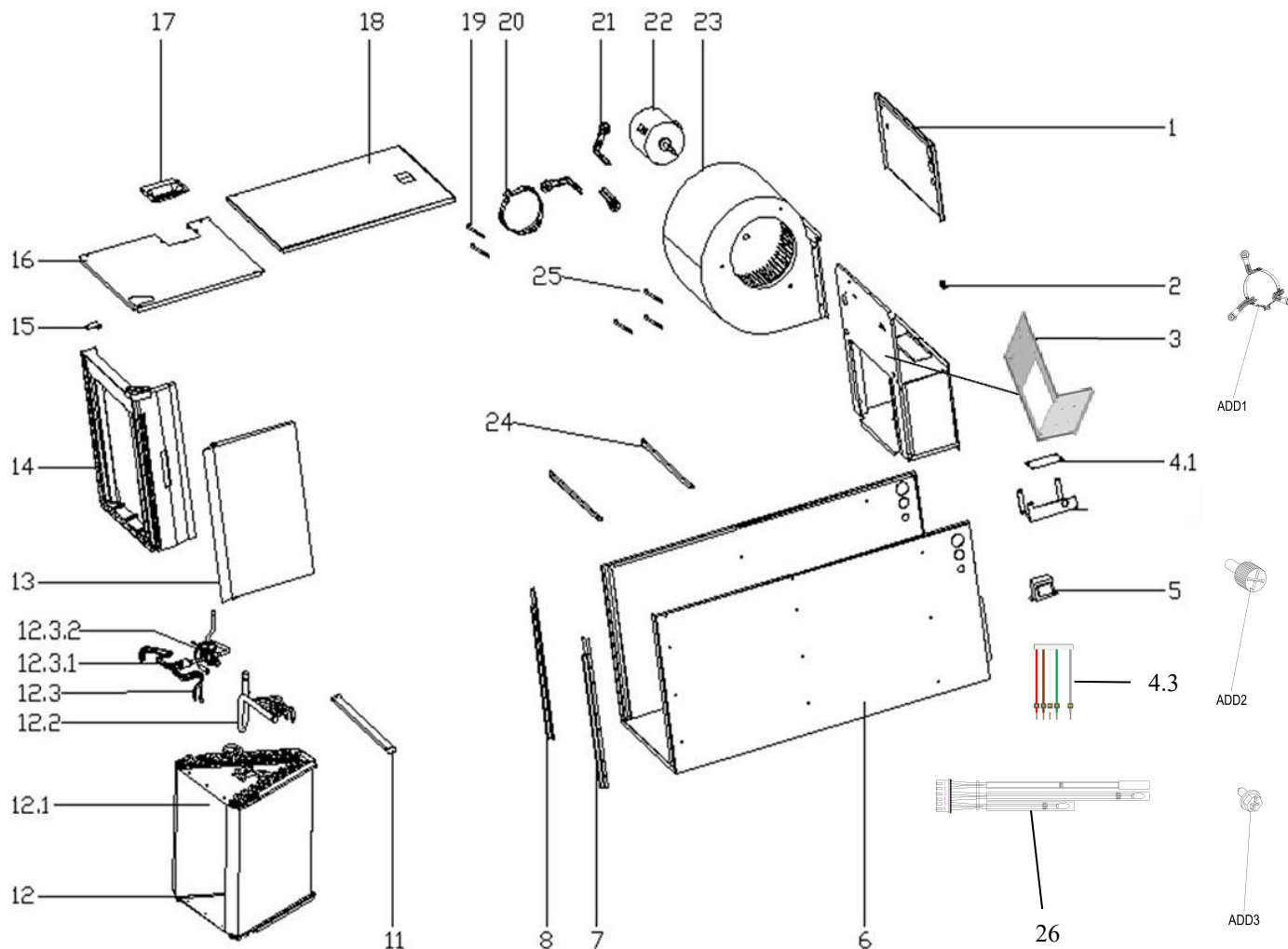
EAHATN-48BAA

4Ton Air Handler

EAHATN-60BAA

5Ton Air Handler





| #    | Part Name                      | Quantity | Part Number       |                |                |
|------|--------------------------------|----------|-------------------|----------------|----------------|
|      |                                |          | 24BAA             | 36BAA          | 48/60BAA       |
| 1    | Electronic control cover plate | 1        | E.AC.230803519    |                | E.AC.230803354 |
| 2    | Connecting terminal            | 1        | E.AC.230803113    |                |                |
| 3    | Duct components                | 1        | E.AC.210836947    | E.AC.230803516 | E.AC.230803340 |
| 4.1  | PCB ass'y                      | 1        | E.AC.230904222    |                |                |
| 4.3  | Wiring harness to CN9 of PCB   | 1        | E.AC.22007-001167 |                |                |
| 5    | Transformer                    | 1        | E.AC.230904118    |                |                |
| 6    | Base ass'y                     | 1        | E.AC.230803528    |                | E.AC.230803344 |
| 7    | Drainage pan supporter ass'y I | 1        | E.AC.230803356    |                |                |
| 8    | Drainage pan supporter ass' II | 1        | E.AC.230803357    |                |                |
| 11   | Cover board                    | 1        | E.AC.230803521    |                | E.AC.230803352 |
| 12   | Evaporator ass'y               | 1        | E.AC.231235787    |                | E.AC.231235558 |
| 12.1 | Evaporator                     | 2        | E.AC.231235904    |                | E.AC.211240381 |
| 12.2 | Evaporator output pipe ass'y   | 1        | E.AC.231235905    |                | E.AC.231235560 |

| #      | Part Name                                      | Quantity | Part Number       |                |                |
|--------|--|----------|-------------------|----------------|----------------|
|        |  |          | 24BAA             | 36BAA          | 48/60BAA       |
| 12.3   | Evaporator input pipe ass'y                    | 1        | E.AC.231235915    |                | E.AC.231235559 |
| 12.3.1 | Distributor ass'y                              | 1        | E.AC.231235917    |                | E.AC.231235612 |
| 12.3.2 | Thermostatic expansion valve                   | 1        | E.AC.231235928    |                | E.AC.231235631 |
| 13     | Drainage pan II (sheet metal)                  | 1        | E.AC.230803532    |                | E.AC.230803363 |
| 14     | Drainage pan I (plastic)                       | 1        | E.AC.230701545    |                | E.AC.230701514 |
| 15     | Drainage pan clap                              | 2        | E.AC.230803353    |                |                |
| 16     | Upside board ass'y                             | 1        | E.AC.230803526    |                | E.AC.230803346 |
| 17     | Cover plate ass'y                              | 1        | E.AC.230803365    |                |                |
| 18     | Downside board ass'y                           | 1        | E.AC.230803524    |                | E.AC.230803347 |
| 19     | Water tray brace                               | 2        | E.AC.230803531    |                | E.AC.230803364 |
| 20     | Motor bracket II                               | 1        | E.AC.230803369    |                |                |
| 21     | Motor bracket I                                | 3        | E.AC.230803368    |                |                |
| 22     | Brushless DC Motor                             | 1        | E.AC.230904147    | E.AC.230904148 | E.AC.230904170 |
| 23     | Centrifugal fan                                | 1        | E.AC.210836914    | E.AC.230803112 |                |
| 24     | Supporter ass'y                                | 1        | E.AC.230803522    |                | E.AC.230803350 |
| 25     | Bolt   | 3        | E.AC.230803564    |                |                |
| 26     | Sensor ass'y                                   | 1        | E.AC.10104-100150 |                |                |
| ADD1   | Motor rubber blanket (rubber + aluminum)       | 3        | E.AC.230701521    |                |                |
| ADD2   | Screw for air filter cover(M4*12)              | 2        | E.AC.230803362    |                |                |
| ADD3   | hex socket self-tapping screw ST4*9.5-CH 1022A | 40       | E.AC.230803668    |                |                |

©2023 ECOER INC.

43671 Trade Center Place, Suite 100Dulles, VA 20166 USA

Tel: 703-348-2538

[www.ecoer.com](http://www.ecoer.com)